



G20

INDONESIA
2022

G20pedia

[g20.org](https://www.g20.org)

List of Contents

G20 Overview

1. What is the G20?	7
2. Who are in the G20?.....	8
3. Who is the Leader of the G20?	13
4. Where is the G20 Headquarters/Secretariat?	13
5. How Important is the G20?	14
6. When did the G20 Start?	14
7. What are the Certain Issues Discussed by the G20?	15
8. What is the Finance Track?	15
9. What is the Sherpa Track?	16
10. What is the G20's agenda/meetings?	18
11. What are the G20 Contributions to the World?	23

G20 Presidency of Indonesia

1. Has Indonesia Officially Held the G20 Presidency?	26
2. Where is the G20 Summit Being Held in 2022?.....	27
3. Who Will Attend the G20 Summit?.....	27
4. Will the Entire Series of G20 Activities Take Place Alone in Bali?.....	30
5. What is the Brief History of Indonesia in the G20?.....	31
6. Where Does Indonesia Stand in the G20?.....	31
7. How Many Delegates Will Attend G20 Indonesia?.....	32
8. What Does the G20 Indonesia Presidency Logo Mean?.....	33
9. What is the theme of Indonesia's G20 Presidency?.....	34
10. What are the G20 Presidency's Top Issues for Discussion?	36
11. What are Indonesia's active roles in the G20?.....	37
12. What are the Advantages of a G20 Presidency for Indonesia?.....	37
13. Is the G20 Beneficial for Indonesia's Economy?	39
14. Will there be Forums Discussing Issues Related to Employment and Sustainability During the G20 Presidency of Indonesia?	41
15. Why is Sustainable Employment a Major Agenda for Indonesia During the G20 Presidency?.....	42

List of Contents

16. Does the G20 Presidency of Indonesia Discuss Issues Rerlated to Youth Employment?	44
17. Does the G20 Presidency of Indonesia Discuss Issues Telated to Disability Empowerment?	45
18. What are the Challenges and Obstacles Faced by People with Disability so Far?.....	46
19. Will there be Meetings Discussing Issues Related to Human Resources and Employment During the G20 Presidency of Indonesia?.....	47
20. Will there be Meetings Discussing Issues Related to Labor Protection During the G20 Presidency of Indonesia?	49
21. What is theT targeted Outcome of the Discussion Related to Labor Protection in the G20 Meetings?	50
22. The G20 Presidency of Indonesia Explores PPR as Resilient Health Systems. What is PPR?	52
23. Why is Environmentally Sustainable Health System (ESHS) a Topic of Discussion in the G20 Meeting?	53
24. What are the Priority Issues Related to the Implementation of Transdisciplinary Science and Technology for Climate Change and Pandemic Preparedness that Indonesia Discusses in the G20 Meetings?	55
25. Why are Energy Transition as well as Environment and Climate Sustainability PriorityTopics of Discussion in the G20 Meeting?	58
26. What is the Role of G20 in Addressing Global Food Security?	60
27. What is the G20 Presidency of Indonesia Support for Global Economy Recovery?	62
28. What are the Responsibilities of Indonesia as the Chair of the Digital Economy Working Group (DEWG) in the G20 Presidency?	64
29. Why does the G20 Consider Digital Skills and Digital Literacy a Priority Issue for Post-Covid-19 Recovery?	66
30. Does the G20 Discuss Cross-Border Data Flow Issues?	68
31. Does the G20 Discuss Digital Money as a Means Of Transacting in the Future?	69
32. What are the Tasks and Discussions Regarding Women in the W20 Engagement Group?	71
33. What Steps were Taken by the Government to Protect Indonesian Migrant Workers (IMW), Most of Whom are Women?.....	73

List of Contents

34. What are the Discussions About Women and Gender Equality in the G20 Presidency of Indonesia?	75
35. What is Glass Ceiling?	77
36. What are the Benefits of the G20 Presidency of Indonesia for Tourism and Creative Economy Developments?	80
37. How Significant is the Creative Economy Sub-Sector in the National Gross Domestic Product (GDP)?	82
38. To What Extent has Indonesia Developed Sustainable Tourism?	83
39. How much is Indonesia's Budget Allocation to Address the Impacts of Climate Change?	87
40. Does Indonesia Benefit from Global Carbon Trading?	89
41. What are the Commitments of G20 Members on Climate Change?	91
42. What is the Plan for Using Electric Cars at the G20 Summit?	96
43. What are the Government's Efforts in Accelerating the Development of the Electric Vehicle Ecosystem?	98
44. What are the Efforts of the Indonesian Government in Supporting the Development of Clean Energy, Especially for the Younger Generation?.....	100
45. What are the Government's Priority Agendas in the Education Sector During the G20 Presidency?	104
46. Why was Gotong Royong (lit: Mutual Assistance) Chosen to be Adopted by G20 Countries in Overcoming Inequality in Access to Quality Education?	106
47. How is the Government's Efforts to Evenly Distribute Digital Technology in the Education Sector?	108
48. Why is the Anti-Corruption Topic an Important Discussion in the G20 Presidency of Indonesia?	116
49. What are the Efforts of Indonesia Through the Corruption Eradication Commission (CEC) to Take Advantage of the G20 Presidency in Eradicating Corruption?	118
50. What is the Role of the Young Generation in Efforts to Eradicate Corruption?	121
51. What is the Commitment of the Government of Indonesia to Maintain Public Health?	126
52. What are the Objectives of the G20 Joint Finance and Health Task Force?	128
53. How is the Administration of the Covid-19 Vaccine in Indonesia? ...	130

List of Contents

54. Does the Government involve the Private Sector in Efforts to Handle Covid-19?	132
55. What is the Government of Indonesia's Commitment to Alleviating Poverty to Achieve the SDGs?	137
56. Does the Kartu Prakerja (lit: Pre-Employment Card) Program Support the Government Achieve the SDGs?	139
57. What is the Evidence of the Government of Indonesia's Seriousness in Managing Climate and Environment Change?	141
58. What are the Benefits of the G20 Side Event on the Community?	147
59. What is the Symbol and Function of Waringin Peak Creative Hub? .	149
60. What is the Strategy for the Development of Super-Priority Destinations (SPD) of Borobudur?	151
61. Why Does the G20 Discuss Issue Regarding Access to Digital Finance for the Young Generation?	157
62. What is Indonesia's Aspiration Regarding Digital Financial Literacy in the G20 Summit?	159
63. Efforts to Introduce Financial Literacy through Gamification	161
64. What Are the Benefits of the G20 Presidency of Indonesia for the Employment Sector?	167
65. What Are the Government Policies that Support the Advancement of the Indonesian Entrepreneurs?	169
66. What Are the Efforts of Indonesia in Increasing Gender Equality in the Work Environment?	171
67. What Does Indonesia Propose for Global Cultural Funding in the G20 Presidency?	177
68. About Dana Indonesiana	179
69. What are the Benefits of the Culture Recovery Fund by the Government of the United Kingdom?	181
70. How Advanced Is the Implementation of the Sendai Framework?...	187
71. Why Does the United Nations (UN) Invite the G20 Members to Invest in Disaster Management?	189
72. What Are the Efforts of Sweden to Mitigate Disaster Threats in the Baltic Sea	191
73. What Are the Main Discussions of the 2nd Development Working Group (DWG) Meeting?.....	197
74. How Can Indonesia Meet Sustainable Development Goals (SDGs) Financing?.....	199

List of Contents

75. The Importance of Public Speaking Skills for Tourism and Creative Economy Players	201
76. Is the Women in Business Action Council of B20 Indonesia a part of the G20 Presidency of Indonesia?	207
77. What is the Role of the Business World in Empowering Women, Especially Gender Mainstreaming?	209
78. How is the Journey of Strengthening the Role of Women in the Global Economy?	211
79. What Was the Result of the Second G20 Education Working Group (EdWG) 2022 Meeting?	217
80. What Will be the Follow-up to the G20 EdWG Report?	219
81. As Technology Is Getting More Sophisticated, Are Teachers Still the Only Key to Successful Learning?	221
82. What is the Official Website of the G20?	224
83. What are the G20's Social Media Accounts?	224
84. Glossary	225



G20 Overview

1. What is G20?

The G20 forum consists of 19 countries and the European Union (EU). This multilateral cooperation forum represents the world's major developed and emerging economies.



2. Who are in the G20?

The G20 is made up of countries from various regions.

The United States, Canada, Mexico, Argentina, Brazil, the United Kingdom, Germany, Italy, France, Russia, South Africa, Saudi Arabia, Turkey, China, Japan, South Korea, India, Indonesia, Australia, and the European Union.



Country Profiles of G20 Members

Argentina

Capital Buenos Aires

GDP \$383.07 billion (2020)

Currency Argentine peso (ARS)

Area 2.78 million km²

Population 45.38 million (2020)

The main sources of economy in Argentina are services, manufacturing, agribusiness, livestock. Key industries include food processing, automobile, textiles, energy, mining, and chemicals.

Australia

Capital Canberra

GDP \$1.331 trillion (2020)

Currency Australian dollar (AUD)

Area 7.692 million km²

Population 25.69 million (2020)

The main sources of economy in Australia are metals and mining, finance, business consulting, energy and utilities, and healthcare.

Brazil

Capital Brasília

GDP \$1.363 trillion (2020)

Currency Real (BRL)

Area 8.516 million km²

Population 212.6 million (2020)

The main sources of economy in Brazil are mining, agriculture, and manufacturing. Brazil is a producer of soybeans, coffee, cocoa, sugar, corn, cassava, oranges, bananas, pineapples, tobacco and cotton.

Canada

Capital Ottawa

GDP \$1.643 trillion (2020)

Currency Canadian dollar (CAD)

Area 9.985 million km²

Population 38.01 million (2020)

The main industries in Canada are the service, manufacturing, and natural resources sectors. Canada's top exports are crude oil, cars, gold, and auto parts.

China

Capital Beijing

GDP \$14.72 trillion (2020)

Currency Renminbi (CNY)

Area 9,597 million km²

Population 1.402 billion (2020)

The main sources of the economy in China are manufacturing, services, and agriculture. The service sector (nearly 50% of GDP) includes trade, retail, postal, etc. The main industries include mining and processing of ore, iron and steel, aluminum, coal, machinery, weaponry, textiles and apparel, petroleum, cement, chemicals, fertilizers, food processing, automobiles, and other transportation equipment.

Germany

Capital Berlin

GDP \$3.806 trillion (2020)

Currency Euro (EUR)

Area 357,386 km²

Population 83.24 million (2020)

The main industries in Germany are machinery manufacturing, automobiles, electrical and electronic engineering, chemicals, and food processing.

France

Capital Paris

GDP \$2.603 trillion (2020)

Currency Euro (EUR)

Area 543,940 km²

Population 67.39 million (2020)

The French economy is led by tourism, manufacturing, and pharmaceuticals. According to OEC, France's main exports are aircraft, helicopters and/or spacecraft, packaged medicines, automobiles, gas turbines and vehicle parts.

India

Capital New Delhi

GDP \$2.623 trillion (2020)

Currency Indian rupee (INR)

Area 3.287 million km²

Population 1.38 billion (2020)

The most important sector in India's economy is agriculture, which provides employment to 58 percent of the population.

Indonesia

Capital Jakarta

GDP \$1.058 trillion (2020)

Currency Indonesian rupiah (IDR)

Area 1,922,570 km²

Population 273.5 million (2020)

Indonesia's main industrial sectors include oil and natural gas, textiles and apparel, mining, footwear, plywood, rubber, and chemical fertilizers.

Italy

Capital Rome

GDP \$1.886 trillion (2020)

Currency Euro (EUR)

Area 301,340 km²

Population 59.55 million (2020)

The main sources of economy in Italy are machinery manufacturing, chemicals, automobiles, and textiles. Fashion design and tourism are other significant revenue generators.

Japan

Capital Tokyo

GDP \$5.05 trillion (2020)

Currency Japanese yen (JPY)

Area 377,975 km²

Population 125.8 million (2020)

Japan's main exports are automobiles, vehicle parts, integrated circuits, engines, and passenger/cargo ships.

Mexico

Capital Mexico City

GDP \$1.07 trillion (2020)

Currency Mexican Peso (MXN)

Area 1.973 million km²

Population 128.9 million (2020)

Mexico's main exports are silver, fruits, vegetables, coffee, cotton, oil and petroleum products.

Russia

Capital Moscow

GDP \$1.483 trillion (2020)

Currency Russian ruble (RUB)

Area 17.13 million km²

Population 144.1 million (2020)

Russia's economy is based on oil and natural gas. Russia's main exports are energy (oil and petroleum products, gas, coal), steel, ferrous metals, and minerals.

Saudi Arabia

Capital Riyadh

GDP \$700.1 billion (2020)

Currency Saudi Riyal (SAR)

Area 2.15 million km²

Population 34.81 million (2020)

Saudi Arabia is the world's leading petroleum exporter. Saudi Arabia's oil sector generates around 87 percent of the country's revenue or 42 percent of GDP.

South Africa

Capital Pretoria (executive), Cape Town (legislative), and Bloemfontein (judicial)

GDP \$301.9 billion (2020)

Currency South African rand (ZAR)

Area 1.221 million km²

Population 59.31 million (2020)

Agriculture, manufacturing, and services all contribute to South Africa's economy. Gold, platinum, automobiles, iron ore, and coal briquettes are among South Africa's biggest exports.

South Korea

Capital Seoul

GDP \$1.631 trillion (2020)

Currency Korean Republic won (KRW)

Area 100,210 km²

Population 51.78 million (2020)

South Korea's largest industries are electronics, automobiles, telecommunications, shipbuilding, chemicals, and steel. South Korea's main exports include electronics, machinery, automobiles, steel, ships, as well as textiles and clothing.

Turkey

Capital Ankara

GDP \$720.1 billion (2020)

Currency Turkish lira (TRY)

Area 783,562 km²

Population 84.34 million (2020)

Turkey's largest export products by value in 2020 are cars, automobile components or accessories, trucks, refined petroleum oils, and jewelry.

United Kingdom (UK)

Capital London

GDP \$2.708 trillion (2020)

Currency Pound sterling (GBP)

Area 242,495 km²

Population 67.22 million (2020)

Services, manufacturing, construction, and tourism make up the UK's largest economy. Gold, commodities, gas turbines, automobiles, and crude oil are the UK's main exports.

United States (US)

Capital Washington, D.C.

GDP \$20.94 trillion (2020)

Currency U.S. dollar (USD)

Area 9.834 million km²

Population 329.5 million (2020)

The US economy is dominated by services in various fields, such as technology, financial services, healthcare, and retail.

European Union

The European Union is an international organization made up of 27 European countries.

GDP \$15.73 trillion (2021)

Currency Euro (EUR)

Area 4.233 million km²

Population more than 500 million

The EU's economy accounts for 18.5 percent of global GDP. The European Union regulates economic, social, and security policies for all of its members.

3. Who is The Leader of the G20?

There is no permanent leader or chair for the G20. One of the member countries is elected to the presidency for a one-year term.

4. Where is the G20 Headquarters/ Secretariat?

The G20 does not have a permanent secretariat. Therefore, the Troika, which comprises the current chair and the immediately preceding and succeeding chairs, is in charge of maintaining sustainability.

The word *troika* comes from Russian, which means triumvirate.

Indonesia, Italy (previous presidency), and India (incoming presidency) are the current members of the G20 Troika.



5. How Important is the G20?

The G20 international forum is significant since it includes more than two-thirds of the world's population, 75 percent of global trade, and 80 percent of worldwide GDP.



World's
Population



Global
Trade



Worldwide
GDP

6. When did the G20 Start?

The G20 was established in 1999 as a result of the G7 member countries' initiative (United States, Canada, Britain, France, Germany, Italy, and Japan).

The G20 brings together developed and developing countries to address global challenges such as:

- ☒ *Mexican Peso crisis* 1994
- ☒ *Asian Financial Crisis* 1997/1998
- ☒ *Russian financial crisis* 1998
- ☒ *Financial Crisis* 2007-2008

7. What are the Certain Issues Discussed by the G20?

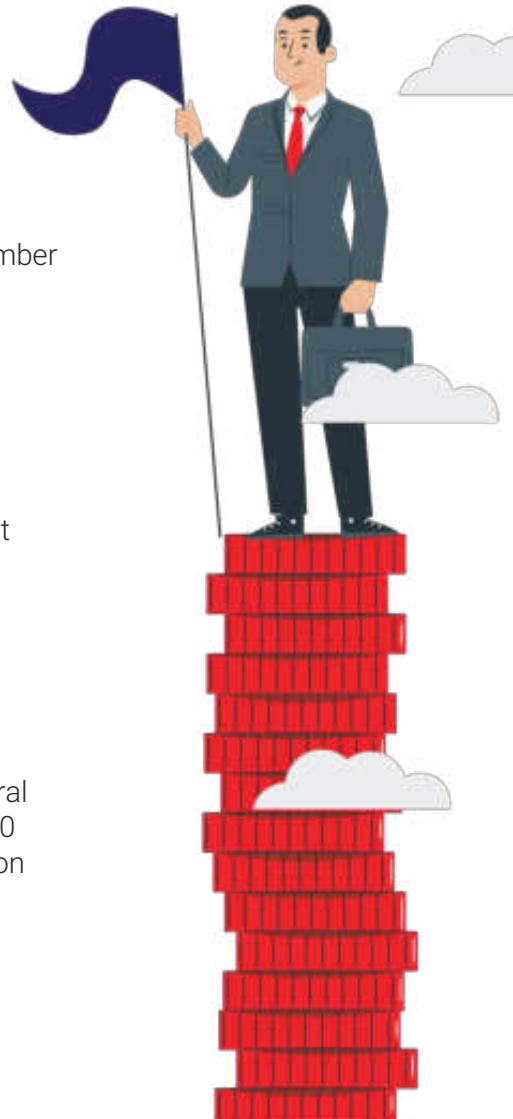
The G20 Forum is divided into two tracks, namely the Finance Track and the Sherpa Track.

8. What is the Finance Track?

The Finance Track is a G20 discussion track that specifically addresses a number of agendas related to the financial sector, such as:

- Fiscal Policy
- Monetary
- Infrastructure investment
- Financial regulation
- Financial inclusion
- International taxation

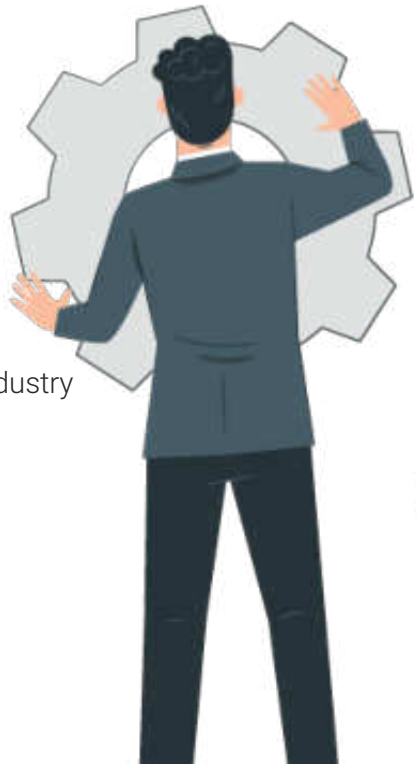
Finance Ministers and Central Bank Governors from all G20 members attend meetings on the Finance Track.



9. What is the Sherpa Track?

Sherpa track is a G20 discussion track that addresses other agendas that are outside the financial sector, such as:

- Anti-corruption
- Digital Economy
- Employment
- Agriculture
- Education
- Foreign Affairs
- Culture
- Health
- Development
- Environment
- Tourism
- Sustainable Energy
- Trade, Investment, and Industry
- Women empowerment



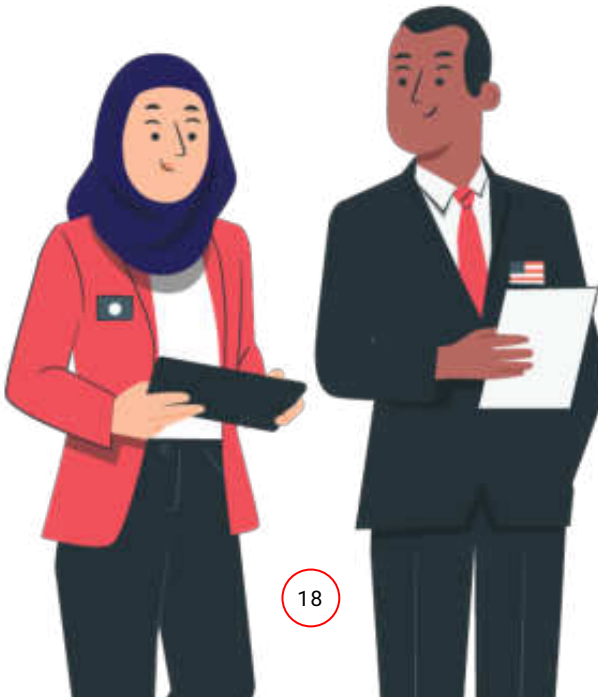
The discussion in the Sherpa track is broader, deeper, and more in-depth. Delegates from each member country attend meetings on this track, which are divided into three types: working group meetings, engagement groups meetings, and ministerial-level meetings.

The term "Sherpa" originates from the Nepalese word for guide, describing how the G20 Sherpas pave the way to the Summit.



10. What is the G20's agenda/meetings?

- The G20 Leaders' Summit as the culmination of the G20 meeting process, is the meetings at the level of heads of state/government.
- Ministerial Meetings based on the sector of discussion in the Working Groups.
- Deputies and Sherpa Meetings. Deputies Meetings are part of the Finance Track, while Sherpa Meetings are part of the Sherpa Track.
- Working Groups Meetings. This meeting discusses priority sector issues that are handled by the Working Groups.



- Engagement Groups Meetings or dialogue forum meetings that are part of the G20. The Engagement Groups Meetings discuss certain issues.



Business 20 (B20) is an international business community platform that represents the private sector's role in driving robust, long-term, and balanced economic growth.



Chair:
Shinta Widjaja Kamdani



theb20summit



B20



@b20



Civil 20 (C20) is a platform for civil society organizations from around the world to engage with governments within the G20 in dealing with critical global issues.



Chair:
Sugeng Bahagijo



Co-Chair:
Fabby Tumiwa



sherpag20indonesia.ekon.go.id/c20



Labour 20 (L20) is a forum that represents the workforce's interests by bringing together trade unions of G20 countries and Global Unions to provide input to the G20.



Chair:
Elly Rosita
Silaban



Co-Chair:
Maria Emeninta



Parliamentary 20 (L20) is a forum, which drew parliament speakers and legislative representatives from G20 countries, aimed to provide global governance a parliamentary dimension and boost political support for international commitments.



Chair:
Puan Maharani




Science 20 (S20) is a meeting place for researchers and scientists from all G20 countries to discuss science related to global health improvement.



Chair:
Prof. Satryo
Sumantri
Brodjonegoro



Co-Chair:
Mego Pinandito

 sherpag20indonesia.ekon.go.id/s20



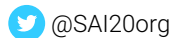
Supreme Audit Institutions 20 (SAI20) is a forum of the highest audit institutions of the G20 countries to encourage cooperation, openness, and accountability.



Chair:
Agung Firman
Sampurna



Co-chair:
Agus Joko
Pramono





Think 20 (T20) is a global forum of think tanks and experts to offer a comprehensive analysis of the G20's ongoing discussions and to produce suggestions to help the G20 develop concrete and sustainable policies.



Chair:
Prof. Djisman
Simanjuntak



Co-chair:
Riatu Maria
Qhibtiyyah



T20 Indonesia 2022



@T20Solutions



T20 Indonesia



T20 Indonesia



www.t20indonesia.org



Urban 20 (U20) is a G20 outreach group that aims to bring urban issues, such as global climate action and sustainable development, to the forefront of the G20 agenda.



Chair:
Anies Baswedan



Co-chair:
Ridwan Kamil



www.urban20.org/u20summit/2022-jakarta



Women 20 (W20) is a forum, which reflects women's voices, advocates for the inclusion of issues related to women in the G20 commitment documents, such as women's development, gender equality, inclusive growth, and women's cooperation in the international economic sector.



Chair:
Hadriani Uli
Silalahi



Co-chair:
Dian Siswarini



sherpag20indonesia.ekon.go.id/w20




Youth 20 (Y20) is a consultation and dialogue forum for youth as future leaders to raise awareness of global issues, exchange views, argue, negotiate, and reach consensus.





Chair:
Gracia
Paramitha



Co-chair:
Michael Victor
Sianipar

 [y20indonesia2022_](https://www.instagram.com/y20indonesia2022_)

 y20-indonesia.org

 Indonesian Youth Diplomacy

 Indonesian Youth Diplomacy



11. What are the G20 Contributions to the World?

Response of the G20 to the Global Financial Crisis in 2008

One of the G20's greatest achievements was its assistance in resolving the global financial crisis of 2008. The G20 has also altered the face of global financial governance by initiating large-scale coordinated fiscal and monetary stimulus programs.



Tax Policy

The G20 has prompted the OECD to promote the exchange of tax-related information. In 2012, the G20 produced the precursor to Base Erosion and Profit Shifting (BEPS). Through BEPS, currently, 139 countries and jurisdictions are working together to combat tax avoidance.



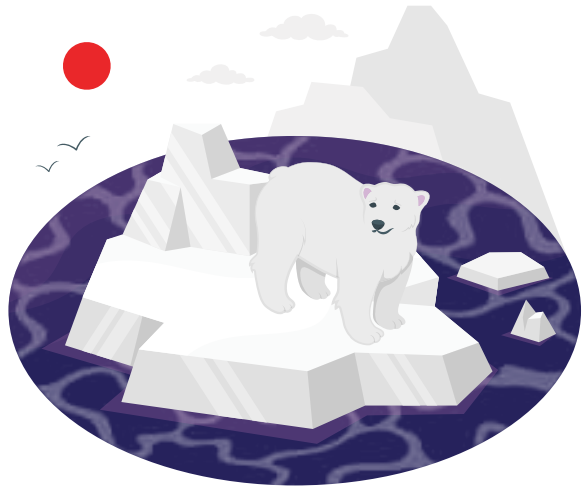
Contribution in the Fight Against the COVID-19 Pandemic.

Deferral of foreign debt payments for low-income countries, capital injection of COVID-19 handling of >US\$5 trillion (Riyadh Declaration), reduction/abolition of import duties and taxes, reduced amount of duty on vaccines, hand sanitizers, disinfectants, medical devices, and drugs are among the G20 initiatives to combat the pandemic.



Other issues

In addition, the G20 plays a role in a variety of international issues such as trade, climate change, and development.





G20 Presidency of Indonesia



1. Has Indonesia Officially Held the G20 Presidency?

Indonesia has been appointed as the G20 Presidency at the 15th G20 Summit in Riyadh, Saudi Arabia, on November 22, 2020. The handover of the presidency from Italy to Indonesia took place on October 31, 2021, in Rome, Italy.

Officially, Indonesia holds the G20 Presidency from December 1, 2021, up to the end of year 2022, when the next presidency will be handed over at the G20 Summit.

2. Where is the G20 Summit Being Held in 2022?



The 17th G20 Leaders' Summit will take place in Bali.

3. Who Will Attend the G20 Summit?

The G20 Summit or G20 Leaders' Summit will be attended by heads of state or heads of government from member countries and invited countries.

Member Countries



Alberto Fernández
President of Argentina



Anthony Albanese
Prime Minister of Australia



Jair Bolsonaro
President of Brazil



Justin Trudeau
Prime Minister of Canada



Xi Jinping
President of The People's
Republic of China



Emmanuel Macron
President of France



Olaf Scholz
Chancellor of Germany



Narendra Modi
Prime Minister of India



Joko Widodo
President of Indonesia
(Host)



Mario Draghi
Prime Minister of Italy



Fumio Kishida
Prime Minister of Japan



Yoon Suk-yeol
Presiden-elect South Korea



**Andrés Manuel López
Obrador**
President of Mexico



Vladimir Putin
President of Russia



**Salman bin Abdulaziz
Al Saud**
King of Saudi Arabia



Cyril Ramaphosa
President of South Africa



Recep Tayyip Erdoğan
President of Turkey



Boris Johnson
Prime Minister of UK



Joe Biden
President of the United States



Charles Michel
President of the European Council



Ursula von der Leyen
President of the European Commission

Invited Guests



Hun Sen
Prime Minister of Cambodia
(Chairperson of ASEAN)



Paul Kagame
President of Rwanda
(Chairperson of NEPAD)



Macky Sall
President of Senegal
(Chairperson of the African Union)



Pedro Sánchez
Prime Minister of Spain
(Permanent Guest of the G20)



Mohamed bin Zayed Al Nahyan
Crown Prince of the Emirate of Abu Dhabi

4. Will the Entire Series of G20 Activities Take Place Alone in Bali?

No, the G20 Indonesia consists of a series of meetings (expected to number approximately 157) that will take place across Indonesia. Jakarta, Bogor, Semarang, Solo, Batam - Bintan, Medan, Belitung, Yogyakarta, Bandung, Sorong, Lombok, Surabaya, Labuan Bajo, Danau Toba, Manado, Malang, and others are among the cities that will be involved.



5. What is the Brief History of Indonesia in the G20?

Indonesia's presidency of the G20 in 2022 will be the first for the country since the international forum was founded in 1999. Indonesia was recovering from the 1997–1998 economic crisis and was regarded as an emerging economy with enormous economic size and potential in Asia at the time.

6. Where Does Indonesia Stand in the G20?

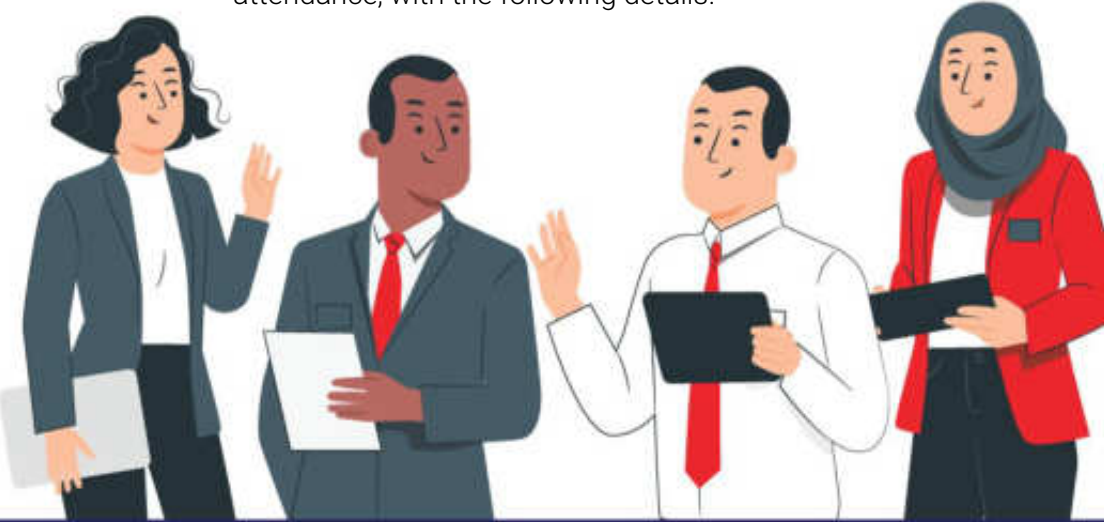
Indonesia is the only member of ASEAN as well as G20 to play a significant role in restoring global health and the global economy.

Indonesia is ranked 10th among G20 countries in terms of Purchasing Power Parity.

Indonesia is also a New Established Emerging Market with a GDP of over US\$1 Trillion.

7. How Many Delegates Will Attend G20 Indonesia?

There are expected to be 20,988 delegates in attendance, with the following details:



429

delegates at
the **G20
Summit**

4,581

delegates at
**Ministerial
Meetings**

1,212

delegates at
**Deputies/Sherpa
Meetings**

8,330

delegates at
**Working Groups
Meetings**

6,436

delegates at
**Engagement
Groups Meetings**

8. What Does the G20 Indonesia Presidency Logo Mean?

The logo of G20 Indonesia is made up of various meaningful graphic elements, including:

Silhouette of the *gunungan* and the *kawung* batik motif



The *kawung* motif represents a spirit of improvement and service to others.



Gunungan denotes a move toward a more inclusive and sustainable global economic recovery.

Red and Blue



The red color on the *gunungan* Flag of the Unitary State of the Republic of Indonesia.



The blue color on G20 Indonesia's identity as a maritime country.

Plant Tendrils



Indonesia's vision of a recovery spirit that is green, inclusive, and sustainable.

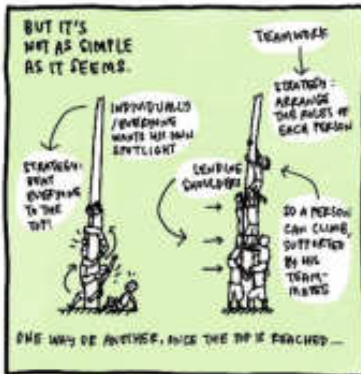
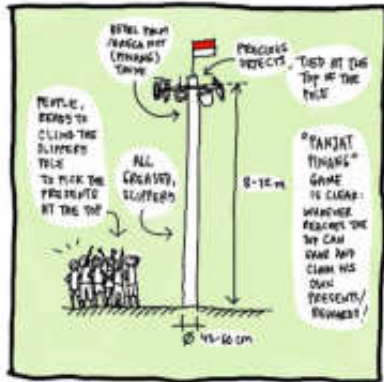


9. What is the theme of Indonesia's G20 Presidency?

Recover Together, Recover Stronger

Through this theme, Indonesia aims to invite the entire world to work together, support one another to recover together, recover stronger, and be more sustainable.





10. What are the G20 Presidency's Top Issues for Discussion?

Indonesia will focus on three main pillars during its G20 presidency in 2022, recognizing the challenges and the necessity for collective action:



11. What are Indonesia's active roles in the G20?

Indonesia plays an active role in several G20 initiatives, including:

- Global Expenditure Support Fund (GESF): support for developing countries in securing national budgets amid the Global Infrastructure Liquidity Crisis.
- Global Connection Alliance (GICA): promotes connectivity by fostering cooperation and knowledge sharing.
- Inclusive Digital Economy Accelerator (IDEA HUB): a forum for unicorn start-ups from across the G20 to meet and exchange ideas.

12. What are the Advantages of a G20 Presidency for Indonesia?

- The G20 presidency amid a pandemic will demonstrate a good perception of Indonesia's economic resilience to the crisis.
- It is a form of acknowledgment reflecting Indonesia's position that can also be used to represent other developing countries.

- This momentum of being appointed to assume the G20 Presidency only comes around once every generation (once every 20 years) and must be fully utilized feasible to help Indonesia recover.
- Indonesia can orchestrate the G20 discussion agenda in such a way that it supports and has a beneficial impact on Indonesia's economic recovery.
- The chance to demonstrate Indonesia's leadership in the international arena, particularly in the global economic recovery.
- Making Indonesia a focal point for global attention, particularly among economic and financial players.
- The G20 meetings in Indonesia are an opportunity to promote tourism and Indonesia's superior products to the international community, with the goal that it will contribute to propelling the Indonesian economy.

13. Is the G20 Beneficial for Indonesia's Economy?

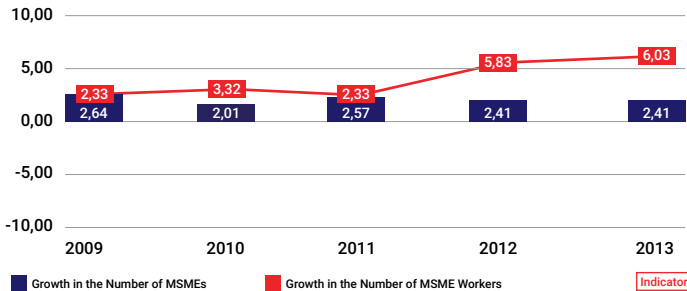
- Yes, it is. According to Finance Minister Sri Mulyani Indrawati, the G20 event will contribute US\$533 million to Indonesia's GDP, or roughly Rp7.4 trillion.
- Increase in domestic consumption to Rp1.7 trillion.
- In terms of tourism, Minister of Tourism and Creative Economy Sandiaga Uno stated that the G20 event will contribute to a projected increase in foreign tourists of 1.8 million to 3.6 million, as well as 600,000 to 700,000 new jobs, owing to rising performance in the culinary, fashion, food, and crafts sectors.
- MSMEs will be involved in a number of G20 events in Indonesia, which will employ roughly 33,000 people.
- According to Teten Masduki, Minister of Cooperatives and MSMEs, the G20 Presidency will also boost investment in domestic MSMEs, given that G20 countries account for 80 percent of worldwide investors.
- The G20 is a rallying point for demonstrating the success of structural reforms, such as the Job Creation Law, to boost global investor confidence.

- Indonesia will take part in designing the global economic recovery policies. If the global economy improves, we will see beneficial effects, one of which will be increased exports.
- The global and domestic economic recovery will boost public consumption, investment, and quickly expanding export-import activity. As a result, tax revenues will increase by over 18%, customs revenues will increase by more than 24%, and PNPB revenues will increase by more than 23%.

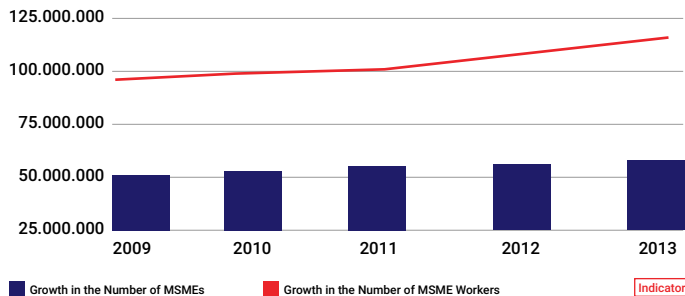
14. Will there be Forums Discussing Issues Related to Employment and Sustainability During the G20 Presidency Of Indonesia?

The G20 Presidency of Indonesia will carry out discussions throughout the year to produce a policy that ensures business continuity, generates resilient, sustainable, and prosperous business innovation, as well as emphasizes entrepreneurship and MSMEs as key instruments in job creation.

Growth in the number of MSMEs and growth Number of MSME Workers



Number of MSMEs and Number of MSME Workers



15. Why is Sustainable Employment a Major Agenda for Indonesia During the G20 Presidency?

Indonesia is expected to experience demographic bonus in the upcoming years, precisely between 2030 and 2045.

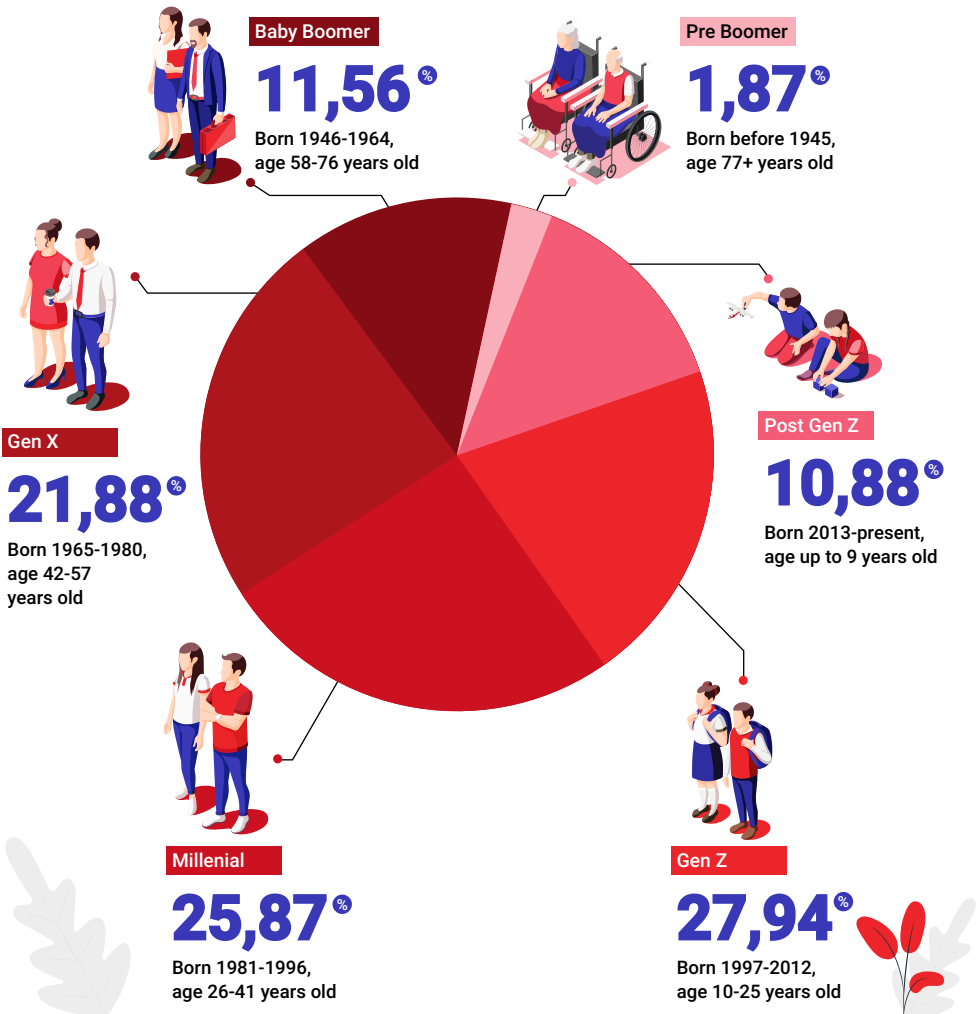
Demographic bonus is a condition in which the productive age population (15-64 years old) will be greater than the non-productive population (65+ years old) with a proportion more than 60% of the total population of Indonesia.

Said demographic bonus is a strategic opportunity for Indonesia to accelerate national development with the support of abundant productive age human resources.



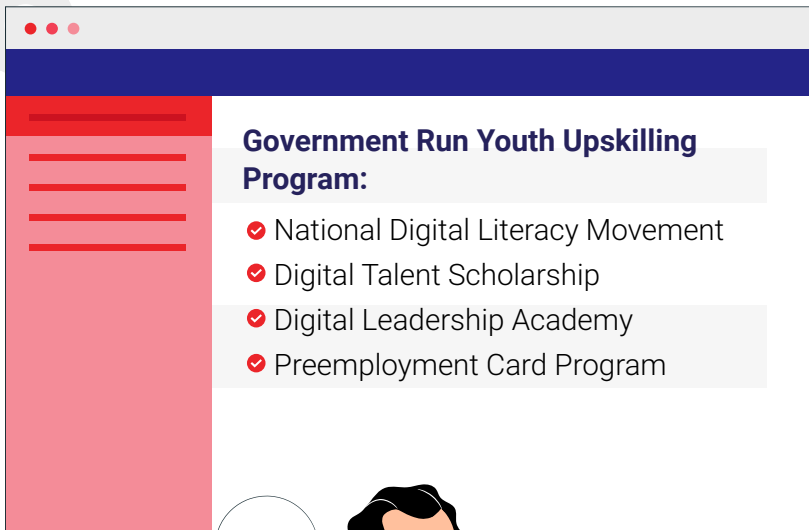
Population Composition of Indonesia, the majority is the working age group

270,20 Million souls



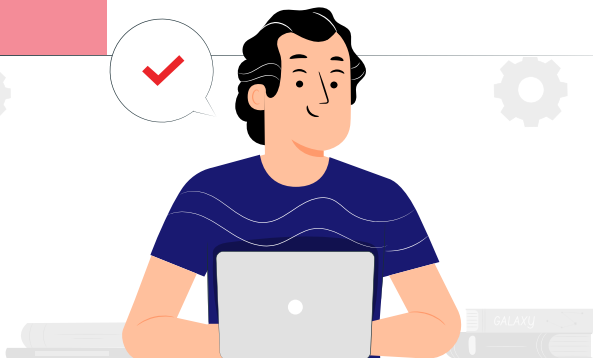
16. Does the G20 Presidency of Indonesia Discuss Issues Related to Youth Employment?

The G20 agenda prepares excellent human resources to encourage entrepreneurship in the future. The young generation needs to demonstrate these main prerequisites values, such as high adaptability, driven, entrepreneurial mindset, and integrity.



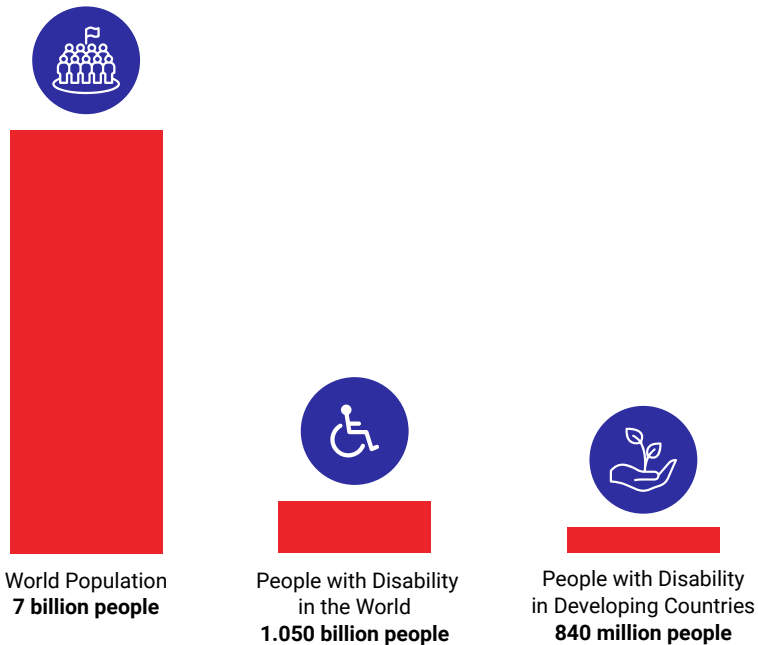
Government Run Youth Upskilling Program:

- ✓ National Digital Literacy Movement
- ✓ Digital Talent Scholarship
- ✓ Digital Leadership Academy
- ✓ Preemployment Card Program



17. Does the G20 Presidency of Indonesia Discuss Issues Related to Disability Empowerment?

The G20 Presidency of Indonesia affirms the importance of multi-sectoral equality and inclusivity for people with disabilities through justified and measurable action plan.



18. What are the Challenges and Obstacles Faced by People with Disability so Far?

Long before Covid-19 pandemic started in 2020, people with disability have already been facing significant challenges and obstacles in getting access to inclusive:

- Information
- Health
- Transportation
- Infrastructure
- Jobs



The G20 Presidency of Indonesia encourages people to start discussions about any issues on every level, including disability issues.

As a form of commitment, Indonesia has started a Disability Contact Center during the G20 Presidency.

People with disability can access DITA (Disabilitas Tanah Air) service (lit: Homeland Disability), managed by Komisi Nasional Disabilitas (National Commission for Disabilities), by dialing 143.

19. Will there be Meetings Discussing Issues Related to Human Resources and Employment During the G20 Presidency of Indonesia?



The G20 has an Employment Working Group that extensively analyzes and discusses workforce ecosystem to promote solid, sustainable, equitable, and inclusive development.

Indonesia harnesses the G20 Presidency to propagate structural reform success, such as through The Job Creation Law.

Job Creation Law No. 11 of 2020 Includes 11 Clusters to Attract Investors:



Business
Licensing



Investment
Ecosystem



Employment



Ease, Empowerment,
and Protection of MSMEs



Ease of Doing
Business



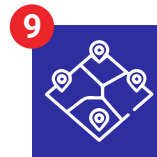
Research and
Innovation Support



Government
Administration



Taxation



Land Procurement



Government Investment
and Facilitation to National
Strategic Projects

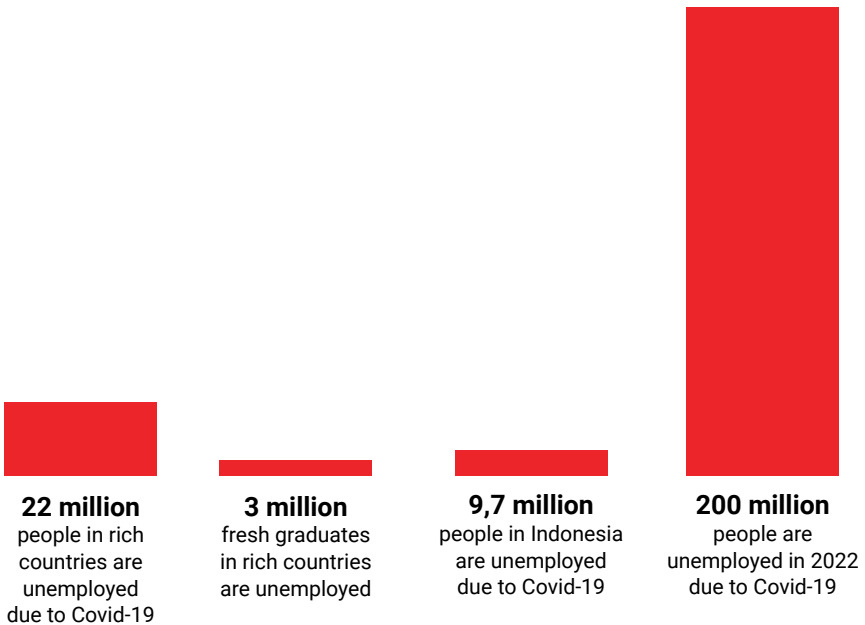


Economic Zones

20. Will there be Meetings Discussing Issues Related to Labor Protection During the G20 Presidency of Indonesia?

Of course. Delegates from the labor union will meet the leaders of the G20 countries in the summit. Together we will extensively discuss ideas related to employment stability and social protection for workers affected by crisis or Covid-19 pandemic.

| 2021 First Semester Data:



21. What is the Targeted Outcome of the Discussion Related to Labor Protection in the G20 Meetings?

Generating definite programs related to poverty and unemployment alleviation as well as support for vulnerable people, including women and people with disabilities, for developing and underdeveloped countries from the L20 meetings during the G20 Presidency of Indonesia?

Due to Covid-19 pandemic, the global poverty number has increased up to **100 million people, the highest surge in 20 years.**



Why Do the Young Generation Need to Keep up with the G20 Meetings?

The young generation need to actively participate in the G20 Presidency of Indonesia because the forum discusses strategic issues that will later be ratified in the form of policies in each of the G20 member countries.

A number of issues relates to the young generation, such as climate change, employment, digital economy transformation, women empowerment, MSMEs, tourism, and health, is discussed in depth in working groups that consist of experts, ministries, as well as the community.



22. The G20 Presidency of Indonesia Explores PPR as Resilient Health Systems. What is PPR?

PPR stands for Pandemic Preparedness and Response that is global health architecture that includes financing future pandemics in the form of global health fund to aid countries experiencing crises.



Three priorities of Indonesia for strengthening global health architecture:

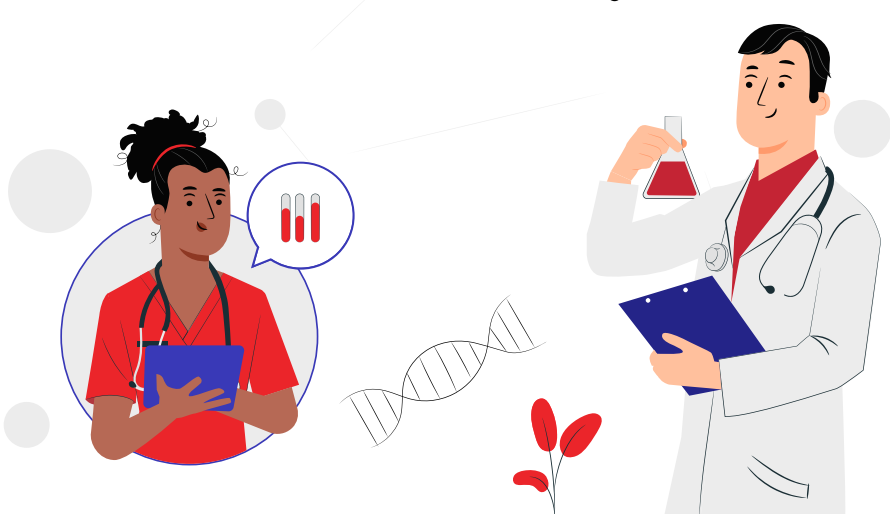
- ✓ Commitment to develop resilience of global health systems that require mobilization of essential health and financial resources.
- ✓ Integration of global health protocol standards.
- ✓ Global manufacturing hub expansion, covering vaccines, therapeutics, and diagnostics to developing countries as well as sharing knowledge about PPR.

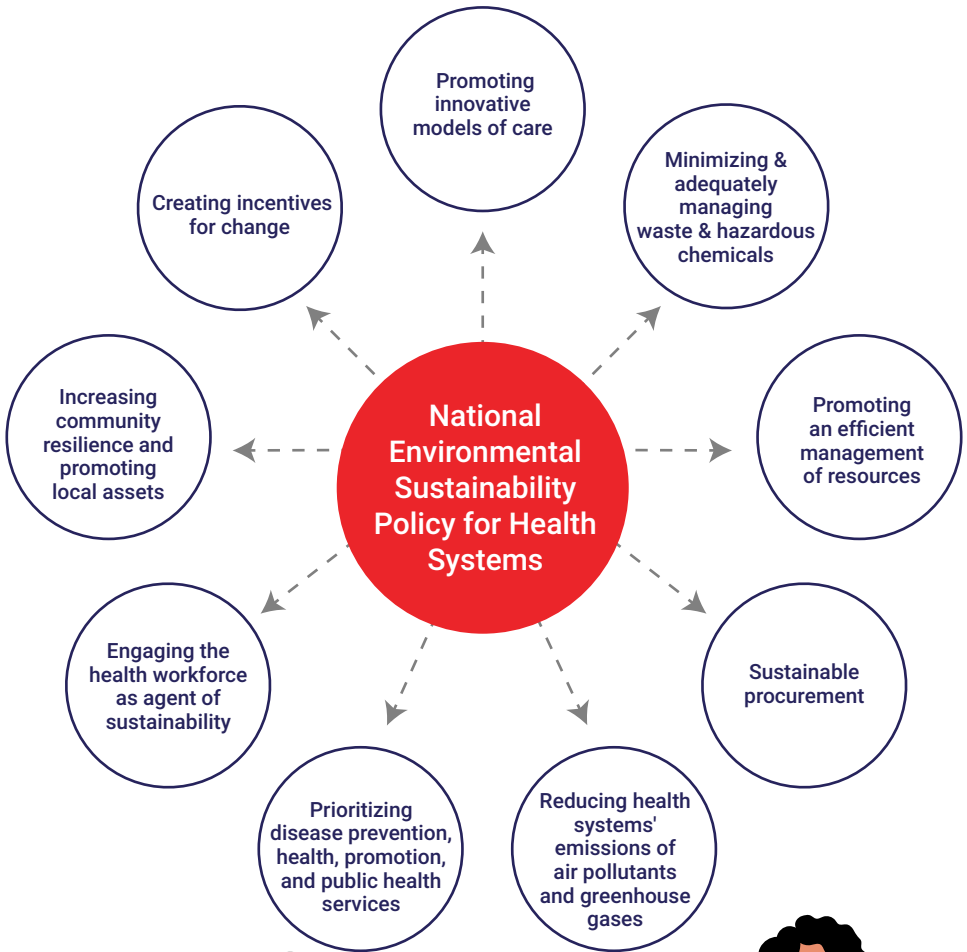
23. Why is Environmentally Sustainable Health System (ESHS) a Topic of Discussion in the G20 Meeting?

The mandate for environmentally sustainable health system is one of shared commitments and responsibilities in accordance with the 2030 agenda for Sustainable Development Goals (SDGs), which was signed by 53 countries in 2013.

In addition, the environment contributes to social well-being by providing the natural resources and ecosystems services that fuel economic development and enable the achievement of wealth.

Reducing environmental damage is in line with efforts to achieve improvements in establishing human and environmental well-being.





24. What are the Priority Issues Related to the Implementation of Transdisciplinary Science and Technology for Climate Change and Pandemic Preparedness that Indonesia Discusses in the G20 Meetings?

Akademi Ilmu Pengetahuan Indonesia (Indonesian Academy of Sciences/IAS) as Chair Engagement Group (EG) supervises Science 20 (S20).

In S20 2022, Indonesia proposed 5 priority issues that are in line with the 3 main pillars for G20 Presidency of Indonesia. The five priority issues have been conveyed by the Chairman of IAS, Prof. Satryo S. Brodjonegoro.



| Five Priority Issues of Science 20 2022

01

Building resilient system

02

Advancing sustainable low carbon health system

03

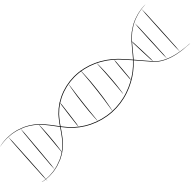
Bolstering transdisciplinary science and technology for climate change and pandemic preparedness

04

Guarantee people at the center

05

Strengthening the nexus between research-policy-practice for climate change and pandemic preparedness



The G20 Presidency of Indonesia

Serves All of US

The G20 Presidency of Indonesia is of benefit for the global community because the G20 is a multi source forum that involves various elements of society, inclusive of professionals, academia, governments from each member, and local as well as international organizations to discuss topics related to current and future issues.

The G20 creates hopes for everyone, including Indonesia's young generation that will become future leaders.



25. Why are Energy Transition as well as Environment and Climate Sustainability Priority Topics of Discussion in the G20 Meeting?

The G20 members accounted for 75% of global energy demand; hence, the G20 members have a strategic role and responsibility in supplying clean energy for the future.

Environment and Climate Sustainability Working Group is in charge of conducting models to accelerate the energy transition, green economy, and environmental sustainability, including the use of public resources and global financial in line with the Paris Agreement.



Potential Utilization of Renewable Energy

EBT Utilization		
Resources	Potential (MW)	Generation (MW)
Solar	400.000	182,3
Hydroelectric	90.000	6.286,7
Biomass	45.000	1.916,4
Wind	60.000	154,3
Geothermal	23.700	2.175,7
Tidal	18.000	0
Nuclear	11.000	0
Total	648.300	10.697,4

Pathways to Net Zero Emission Principles and Strategy of the Government

Net Zero Emission Principles of Ministry of Energy and Mineral Resources

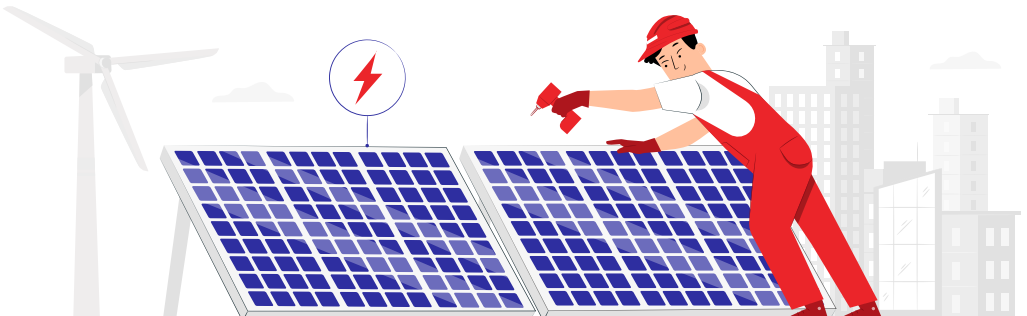
Increase the electricity consumption of households and industry

Carbon capture and storage (CCS) utilization

Reduce fossil energy by carbon tax and trading, co-firing electric steam power plant with new renewable energy, and also electric steam power plant retirement

Increase new renewable energy consumption

Electric vehicles in the transportation sector



26. What is the Role of G20 in Addressing Global Food Security?

The G20 Agriculture Working Group compiles an issue note with the theme “Balancing Production and Treat to Fulfill Food for All”.

The theme ensures national food supply from domestic agricultural sources, smooth food trade, and cross-border agriculture to achieve food security for all countries.

Global collaboration among the G20 members is also expected to improve the livelihood of smallholder farmers as well as promote agriculture and innovative agripreneur trough digital agriculture.



Agriculture Sector Contribution to GDP of Indonesia in 2020 (in %)



27. What is the G20 Presidency of Indonesia Support for Global Economy Recovery?

The G20 Presidency of Indonesia is expected to be a catalyst to inclusive global economy recovery that puts forward both public-public and public-private partnerships as well as policy innovations to reduce barriers in international trade.



Six Priority Issues to Encourage Sustainable Investment

- 1 WTO reform
- 2 The role of multilateral trading system to strengthen the achievement of Sustainable Development Goals (SDGs)
- 3 Trade, investment and industry response to the pandemic and global health architecture.
- 4 Digital trade and sustainable Global Value Chains (GVCs)
- 5 Spurring sustainable investment to accelerate global recovery
- 6 Inclusive and sustainable industrialization

Will Technology & Digitalization Replace the Role of Humans so that Mass Layoffs Can Occur?

Digitization will not be able to replace the role of humans 100%. Machines and robots cannot replace human skills, such as empathy, creativity, and complex analysis.

The Coordinating Minister for Economic Affairs, Airlangga Hartanto, said that digital transformation will open at least 2.5 million new jobs in 2024 and contribute 1% to Indonesia's GDP. In the long term, Indonesia even needs nine million digital human resources.



28. What are the Responsibilities of Indonesia as The Chair of the Digital Economy Working Group (DEWG) in the G20 Presidency?

DEWG is a group of experts that discusses digital economy issues with strategic, dynamic, and comprehensive discussions on cross-sector digital issues.

From the business perspective, Indonesia also encourages the members of G20 to realize a level playing field as a common goal.

The three priority issues that will be conferred by the members of G20 in the DEWG are



PostCovid-19 Recovery and Connectivity



Digital Skills and Digital Literacy



Cross-Border Data Flow and Data Free Flow with Trust



The Principles of Indonesia in Discussing Cross-Border Data Flow Across the Members of G20

Lawfulness

The process of exchanging data must be in accordance with the legal rules and can be accounted

Fairness

The data exchange must have a clear purpose

Transparency

The importance of open and easy-to-understand communication and information regarding data processing

Reciprocity

29. Why does the G20 Consider Digital Skills and Digital Literacy a Priority Issue for Post-Covid-19 Recovery?



Secretary-General for the Indonesian Ministry of Communications and Informatics and the Chair of Digital Economy Working Group (DEWG) Mira Tayyiba stated that “Digital Skills and Digital Literacy” is a priority issue due to the available digital infrastructure development.

The government views the need for in-depth discussion under the G20 to gain insights regarding the positive use of digital access and support productivity.

MSME Digitalization Trends

Based on Ministry of Communications and Informatics records during the pandemic, 16.4 million MSMEs have been digitized. This number has doubled compared to conditions before the pandemic.

World Bank data shows that around 80% of MSMEs connected to the digital ecosystem more resilience.

Ministry of Cooperatives and SMEs data shows that almost 50% of online businesses use social media such as WhatsApp, Instagram, and TikTok to market their products. In addition, only 15% of enterprises utilize the e-commerce marketplace platform



30. Does the G20 Discuss Cross-Border Data Flow Issues?

To answer the challenges of managing cross-border data flow policies, which have different regulatory approaches in each country, the Ministry of Communications and Informatics conducts discussions dialogue in the G20 meeting to build mutual understanding.

The reason is that each country has a different perspective in managing the increasingly rapid flow of data due to the use of digital space during the pandemic, related to online transactions, health data, to the dissemination of data through social media.

Digital technology is naturally borderless so that data can flow throughout the country. However, uniform regulation is in demand.



31. Does the G20 Discuss Digital Money As a Means Of Transacting in the Future?

The G20 presidency of Indonesia provides space for discussion regarding plans to issue digital currency, also known as the Central Bank Digital Currency (CBDC). The issuance of CBDC is a response to the widespread presence of cryptocurrency. Although both are blockchain-based, CBDC is issued and controlled by the central bank as legal tender in place of currency.

Bank Indonesia will encourage the general principles of the Digital Rupiah CBDC discussion within the framework of discussing the cross-border payment system. Digital currency expects to create economic efficiency and support financial inclusion.



Important Role of Women

The world commemorates International Women's Day every March 8th. For Indonesia, this commemoration is a means of reminding the role of women, which has a substantial impact on the pandemic and the economic crisis recovery process because 60% of Indonesia's gross domestic product (GDP) depends on the role of women.

As a form of the state's presence for all its people, including women, the G20 Presidency of Indonesia promotes the creation of an equal, inclusive, fair and sustainable space for women in household affairs, economy, and the protection of female migrant workers.

Several government programs for women's empowerment have been rolled out, such as the Program Keluarga Harapan (PKH) (lit: Family Hope Program) to increase financial inclusion to entrepreneurship training for women such as the: PKH to increase financial inclusion for woman entrepreneur.

32. What are the Tasks and Discussions Regarding Women in the W20 Engagement Group?

W20 is an official G20 engagement group that represents women's voices regarding gender equality in the public sphere, health, women's economic empowerment, and defense against women with disabilities and rural women.

Under the coordination of W20, Indonesia brings up important issues regarding the role of women, especially in times of pandemic, economic, and climate change crises. Women have high resilience to recover from the pandemic.



I The Role of the Government in Empowering Women:

- ✓ Digital marketing training for women entrepreneurs
- ✓ PKH (Program Keluarga Harapan/Family Hope Program)
- ✓ BERJARAK (Bersama Jaga Keluarga Kita/ Together We Take Care of Our Family)
- ✓ PNM Mekaar (Membina Ekonomi Keluarga Sejahtera/Fosters Prosperous Family Economy)
- ✓ Women's entrepreneurship training
- ✓ Program sembako (lit: Food program)



33. What Steps were Taken by the Government to Protect Indonesian Migrant Workers (IMW), Most of Whom are Women?

The government issued a Circular Letter of the Minister of Manpower and Transmigration No. SE.03/MEN/IV/2011 concerning the prevention of sexual harassment in the workplace.



SE.03/MEN/IV/2011

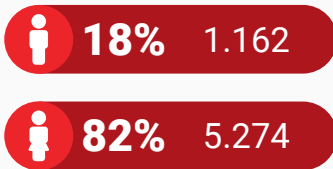
The Ministry of Women's Empowerment and Child Protection has also issued several regulations, such as the Ministerial Regulation No. 5 of 2015 concerning the provision of gender-responsive work facilities and childcare in the workplace, as well as the Ministerial Regulation No.1 of 2020 concerning the allocation of women workers shelter at work.

The protection of IMW also includes ending human trafficking, ensuring comprehensive Indonesia Migrant Workers protection from before departure to returning to the country, optimizing the role of the Indonesian National Army-Indonesian National Police, administering health protocols, and implementing early detection of various possible crimes.

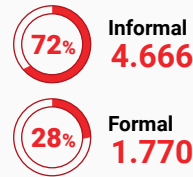


Placement of Indonesian Migrant Workers in January 2022

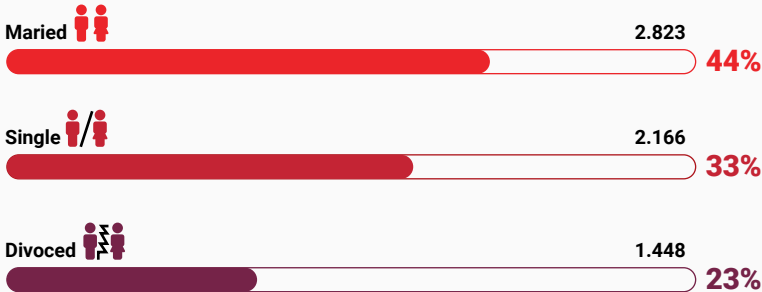
Based on Gender



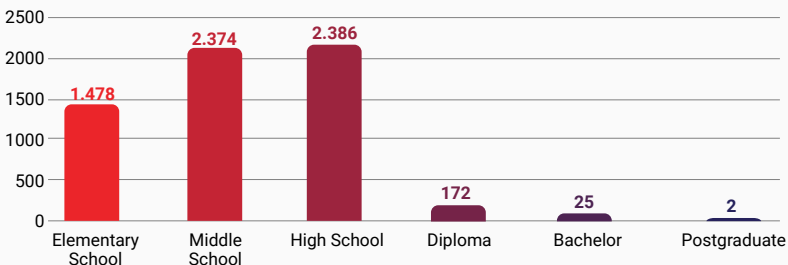
Based on Sector



Based of Marital Status



Based of Education Level



34. What are the Discussions About Women and Gender Equality in the G20 Presidency of Indonesia?

Since Women 20 (W20)'s establishment in 2015, W20 pushed for the commitment of G20 members to reduce the gender gap in labor force participation by 25% by 2025.

This step was carried out through empowerment and economic inclusion of women through MSMEs for sustainable development, with technology as an enabler.

The Chair of Women 20 Indonesia Hadriani Uli Silalahi said efforts to improve the quality of MSMEs owned by women could be one way to eliminate discrimination. This step is also in line with efforts to maximize the use of digital platforms in building a resilient women-owned MSME ecosystem.



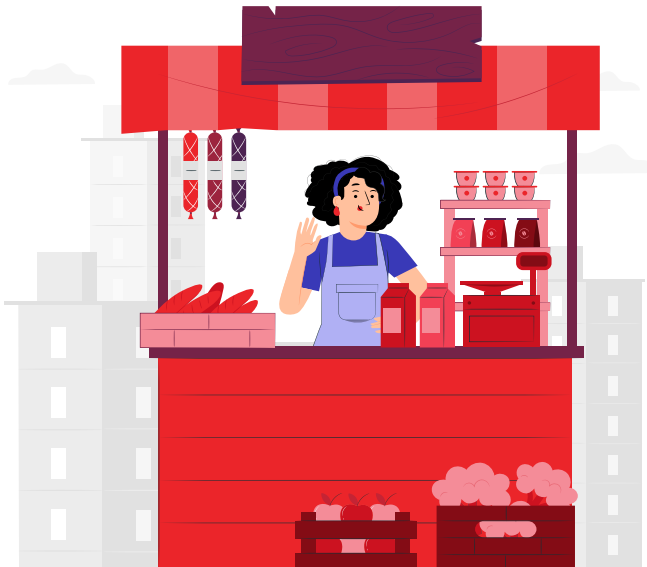
| Indonesian Women's MSMEs in Numbers

41,6 million Number of Indonesian Women's MSMEs

2,4 million Women entrepreneurs who has received KUR (Kredit Usaha Rakyat/People's Business Credit)

63,5% Recipients of PNM Mekar (PNM Program Membina Keluarga Sejahtera/Fosters Prosperous Family Program) specially for micro and ultra micro women entrepreneurs with a fund of US\$ 1.1 billion

4,53 million MSMEs owned by women have entered the digital ecosystem during the pandemic

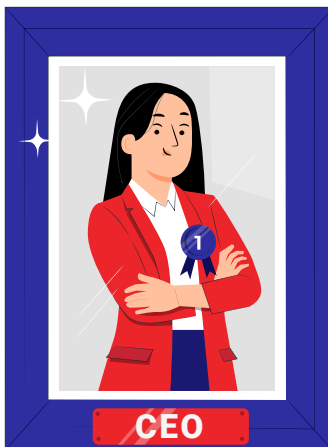


35. What is Glass Ceiling?

The glass ceiling is a concept developed in the 1980s that describes the invisible barriers that prevent women from occupying the top positions in the corporate hierarchy.

The highest position in the company considers only appropriate for men because, in terms of nature, talent, and behavior, men are more suitable to lead a company.

Glass ceiling impacts the wage gap, the segregation of types of work, and barriers to the promotion process.

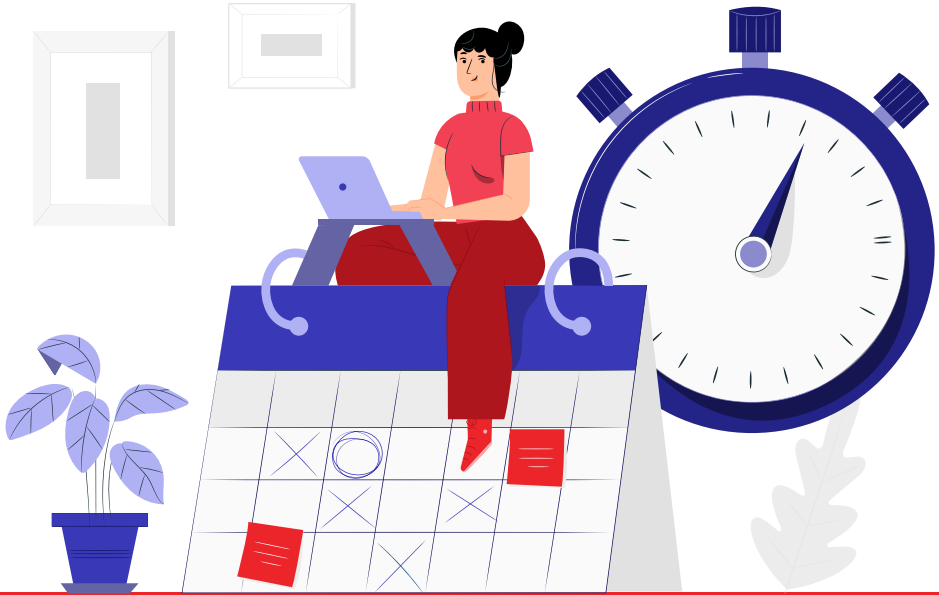


Indonesian Female CEOs by Company Scale

23,5% Small Enterprise

17,4% Medium Enterprise

12,9% Large Enterprise



| Benefits of Having Women Leaders in Organizations

- ✓ Helping organizations achieve a better result
- ✓ Having a better understanding of consumers' needs and the solutions
- ✓ More inclusive and gender-friendly systems & ways of working
- ✓ Empowering people
- ✓ Detail-oriented and efficient

What are the benefits of a being the President of the G20 for Indonesia?

Not only Jakarta, but 25 cities throughout Indonesia, such as Yogyakarta, Solo, Malang, Palembang, Bali, and Lombok, will also host the G20's meetings. Until November 2022, there will be 184 meetings consisting of one high-level conference, 20 ministerial and central bank governor level meetings, 17 sherpa level meetings, 56 working group level meetings, and 90 engagement group level meetings until November 2022.

The Indonesian government targets that the implementation of the G20 will have a positive impact on the economy, job creation, promotion of Indonesian tourism, and Indonesia's strategic role in the design of world economic recovery policies.

| Benefits of Organizing the G20 for Indonesia

Economy

Increased **domestic consumption to IDR 1,7 trillion and IDR 7,4 trillion** contribution to the GDP of Indonesia

Employment

Involving **MSMEs that absorb 33.000 workers and create 700 thousand new jobs.**

Promotion of Indonesia

An increase in **foreign tourists from 1,8 million to 3,6 million.**

Indonesia's strategic

Role in **designing world economic recovery** policies that benefit the Indonesian economy.

36. What are the Benefits of the G20 Presidency of Indonesia for Tourism and Creative Economy Developments?

The Tourism Working Group of G20 (TWG), led by the Ministry of Tourism and Creative Economy, encourages tourism resilience as a global recovery effort after the Covid-19 pandemic.

The TWG G20 identified the primary issue of discussion as an agent of change in tourism transformation that focuses on community empowerment through the development of MSMEs and community-based tourism such as tourist villages, creative villages, and equitable programs.

The Ministry of Tourism and Creative Economy stated that Indonesia's important role in becoming a consensus pioneer for the G20 countries refers to the three critical pillars of the president's directive:



**Inclusive
health**



**Digital
Transformation**



**Energy
transition**

Post-pandemic Tourism and Creative Economy of Indonesia

Paradigm

Quality and Sustainable Tourism

Principles

- *More personalized*
- *Customized*
- *Localized*
- *Smaller in size*



2022 Goals

- Contribute 4,3% to the GDP of Indonesia
- Provide up to IDR1.236 trillion added value
- Achieve creative product export value of US\$21,28 billion
- Create 400 thousand new jobs

Five actions taken by the Ministry of Tourism and Creative Economy

- HR Development
- Innovation through digitization
- Empowering women and the younger generation
- Rehabilitation, conservation, and maintenance of the environment
- Investment in tourism and digital

37. How Significant is the Creative Economy Sub-Sector in the National Gross Domestic Product (GDP)?

According to data from the 2020 Creative Economy OPUS report, the contribution of the creative economy sub-sector to the national GDP: 2017 IDR1.000 trillion, 2018 IDR1.105 trillion, 2020 IDR1.211 trillion

The creative economy sector's contribution to the GDP of Indonesia is the third-largest in the world, after the United States and South Korea.

However, in terms of labor absorption in the creative economy sector, Indonesia is superior to the United States. In 2019, Indonesia's creative economy sector absorbed 17 million workers. This number is much higher than the United States, which only has 4,7 million workers in the creative economy sector.

Creative Economy in Indonesia

Contribution of the Creative Economy Subsector to the National Gross Domestic Product (GDP)



38. To What Extent has Indonesia Developed Sustainable Tourism?

To develop sustainable tourism, the Ministry of Tourism and Creative Economy has developed four focus pillars

- **Sustainable management** (tourism business)
- **Long-term sustainable economy** (socio-economic)
- **Sustainable culture that must be developed and maintained continuously**
- **Environmental aspects** (environment sustainability)

Armed with these four main pillars, the trend of sustainable tourism will be in great demand by tourists.



Sustainable tourist destinations in Indonesia



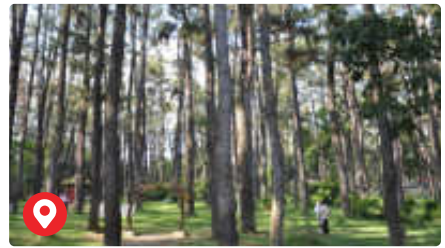
Baluran National Park, East Java



Ujung Kulon National Park, Banten



Sangeh Monkey Forest, Bali



Punti Kayu, Palembang



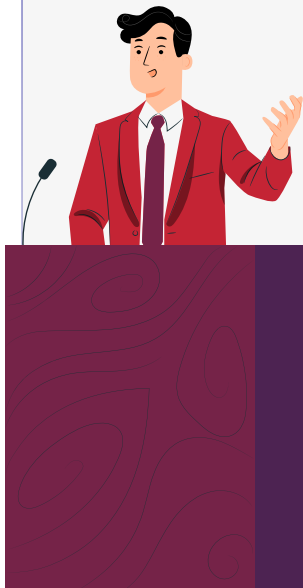
Umbul Pongok, Central Java

The Role of the Government in Soliciting Millennials to Care About Climate Change

As the spearhead of climate change, the government makes various programs that involve the younger generation. Ministry of Energy and Mineral Resources (Kementerian ESDM) Resources held the GERILYA program (Solar Power Initiative Movement) so that students contribute to increasing the capacity of Solar Power Plants (SPP) toward net zero-emission.

GERILYA has produced 52 energy activists (first wave) and is ready to educate 57 students in the second wave. GERILYA invites students to learn about the design, installation, and marketing of SPP in a two-month course. After that, they will be placed in several partner companies to participate directly in a team-based project for four months.

GERILYA is a joint program between the Ministry of Energy and Mineral Resources and Ministry of Education, Culture, Research and Technology (Kemendikbud Ristek) that involves the private sector, academics, practitioners, associations, NGOs, and energy stakeholders.



Government Programs in Energy Transitions Youth Forum at the G20

Energy Transitions
Innovation Challenge



Surya Power Solusi
untuk Negeri
(SUPER SUN)
or Solar Power
Solutiion Innovation



Go-Gerilya featuring
Desa Energi Berdikari
Pertamina
(Pertamina
Independent Energy
Village)



39. How much is Indonesia's Budget Allocation to Address the Impacts of Climate Change?

Previously, developed countries committed to providing US\$100 billion in climate finance by 2020 to be given to poor and developing countries. It was only at the 26th Climate Change Conference or COP26 in Glasgow, Scotland, in November 2021 that developed countries succeeded in agreeing again.

Indonesia is already trying to fund climate change mitigation programs. Indonesia's lobbying at the G20 expects to encourage developed countries to provide US\$100 billion for tackling climate change.





Funding for climate change management in Indonesia

Years	Allocation	Realization
2018	132,47	126,04
2019	97,66	83,54
2020	77,81	N/A

Value (Trillion Rupiah)

40. Does Indonesia Benefit from Global Carbon Trading?

Of course. Based on data from the Coordinating Ministry for Maritime Affairs and Investment, Indonesia has the potential to absorb around 113,18 gigatons of carbon emissions.

If currently, carbon credits are worth US\$5 per tonne, then Indonesia's potential revenue will reach US\$565.9 billion or equivalent to IDR8,000 trillion.

This potential is supported by the abundance of natural resources, such as rainforests, mangrove forests, and peat forests which can absorb billions of tons of carbon emissions.



Benefit from global carbon trading



| Potential of Carbon Trading in Indonesia



Tropical Rain Forest

Total area of **125,9 million hectares**

CO2 emission absorption capacity of **25,18 billion tons**



Mangrove Forest

Total area **3,31 million hectares**

CO2 emission absorption capacity of **33 billion tons**



Peatlands

Total area **7,5 million hectares**

CO2 emission absorption capacity of **55 billion tons**

41. What are the commitments of G20 members on climate change?

The climate change discussed in the finance track is about sustainable and climate change finance. G20 leaders are committed to reducing the earth's temperature to no more than 1,5 degrees Celsius and reducing greenhouse gases by 314-398 million tons of CO2 by 2030.

In order to achieve this commitment, sustainable forestry management and land use are the driving factors for cheaper and faster CO2 reduction. Indonesia is under the world's attention in making the clean energy transition.

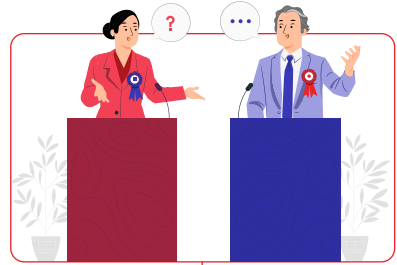
Commitment to tackling climate change is carried out through progressive steps that put forward the principles of a sustainable economy, justice, and affordability by taking into account the business climate and small communities.



| NDC | Indonesia's Climate Commitment

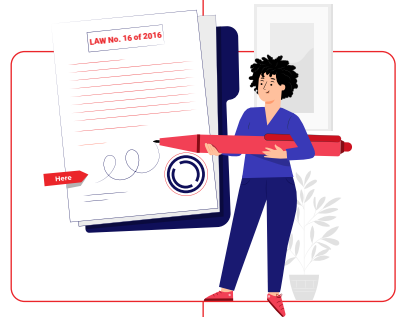
The Paris Agreement

A joint commitment of almost all countries to reduce greenhouse gas emissions (mitigation) and address the impacts of climate change (adaptation), including providing funding for both.



Ratified by the Indonesian Government in Law No. 16 of 2016

Indonesia's climate commitments are expressed in Nationally Determined Contributions (NDC)



Main Sectors of Emission Reduction

- Forestry
- Energy
- Agriculture
- Industrial Process and Product Use
- Waste Management

Main Contributors to Greenhouse Gas Emissions



| NDC | Indonesia's Climate Commitment

Indonesia's Emission Reduction Target

- 29% of Business as Usual (BAU) conditions in 2030 with own efforts.
- 41% of BAU if there is international support (funding, technology transfer, and facility upgrades)

**Indonesia's
Climate Change
Mitigation
Ambitions**



Indonesia's Climate Change Adaptation*

**(First NDC Indonesia, 2016)*

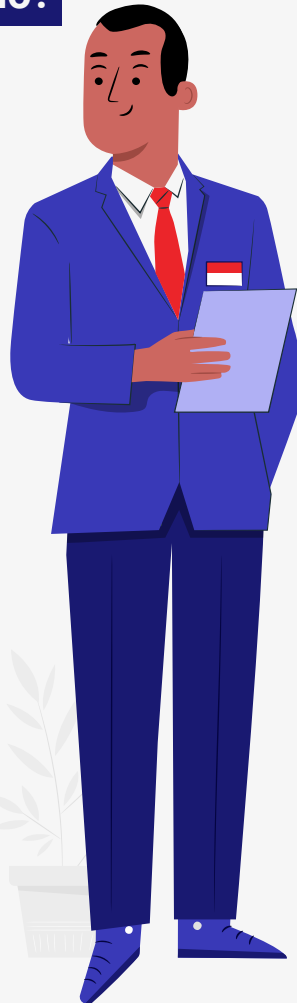
- Economic resilience
- Social security and livelihood
- Ecosystem and landscape resilience

What are the three main challenges in carrying out the energy transition according to President Joko Widodo?

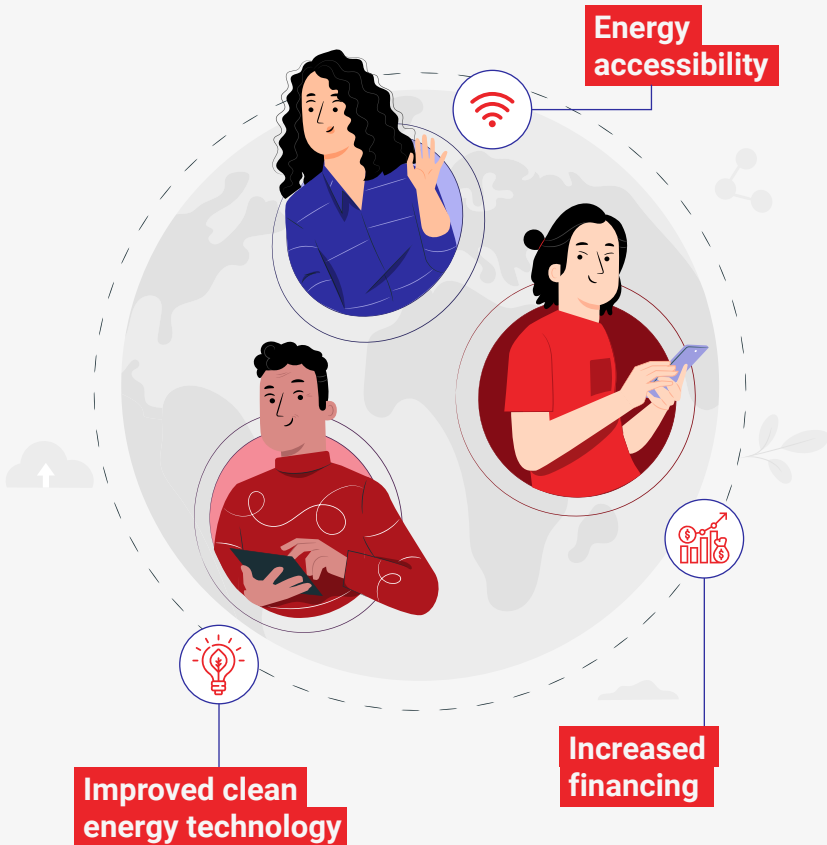
President Joko Widodo said the **first big challenge was access to clean energy**. Not all citizens of the world have access to affordable, reliable, sustainable, and modern energy.

The second challenge is funding. Countries need to find and explore new mechanisms that do not burden the community, meaning economical and competitively priced.

The third challenge is research and technology support to produce efficient, competitive, and value-added technology.



Three Pillars of Energy Transitions Working Group (ETWG)

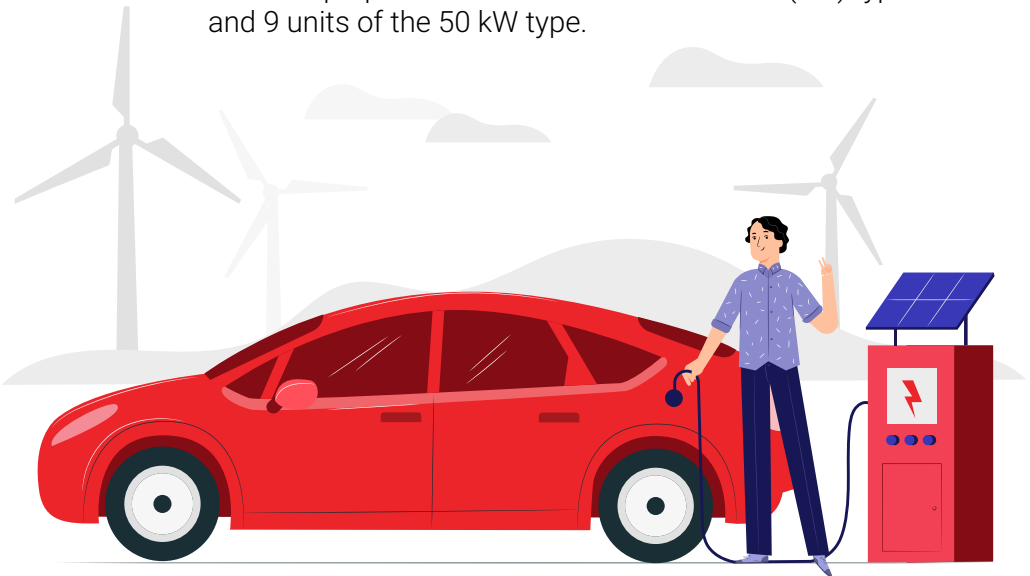


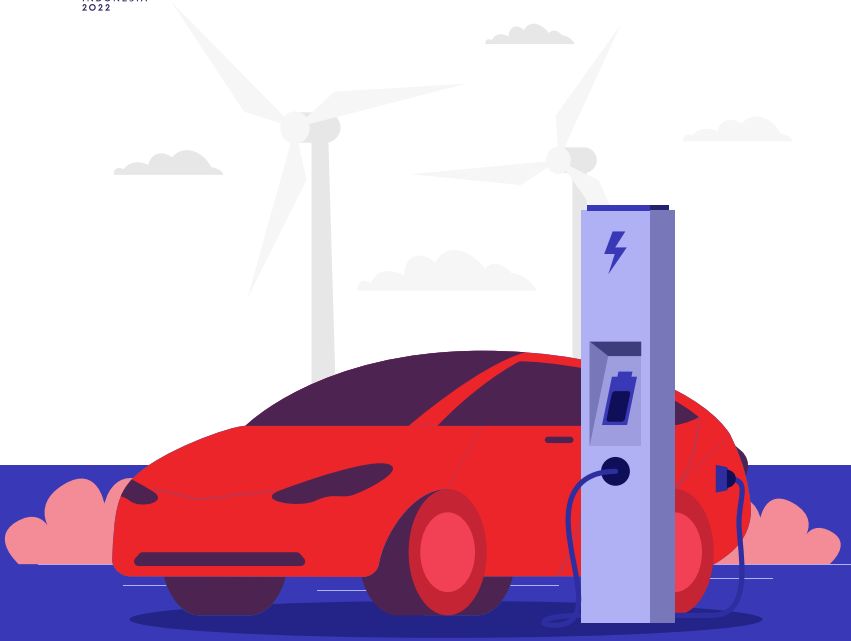
42. What are the Commitments of G20 Members on Climate Change?

At the G20 Summit in Bali, the plan is to use 500 electric cars through a collaboration of various parties such as Ministries/Institutions, Local Governments, Grab Indonesia, Intelligent Transport system (ITS) Indonesia, and the World Resources Institute (WRI).

Not only electric cars, but the G20 Summit committee has also prepared a supporting ecosystem for electric cars, such as SPKLU (Sistem Pengisian Kendaraan Listrik Umum) or Public Electric Vehicle Charging System (PEVCS). In Bali, there will be 21 PEVCS fast-charging units in 15 shelters.

PLN has prepared 12 units of the 25 kiloWatt (kW) type and 9 units of the 50 kW type.





The government has ratified Presidential Regulation (Perpres) No. 55 of 2019 regarding the development of electric cars.

Three important aspects of this rule include:



**Environment and
conservation**



**Energy efficiency
and resilience**

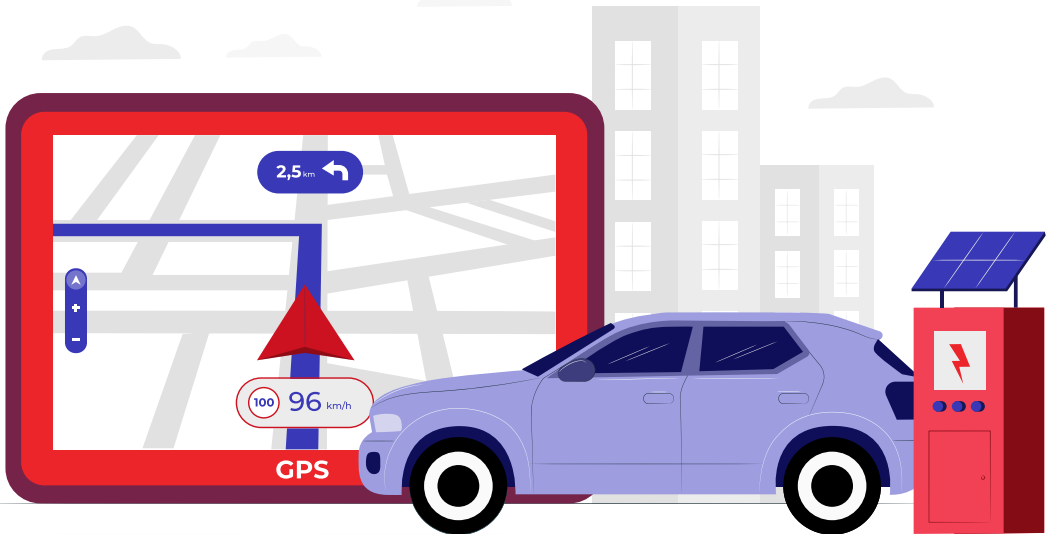


**Increasing
industrial capacity
and competitiveness**

43. What are the Government's Efforts In Accelerating the Development of the Electric Vehicle Ecosystem?

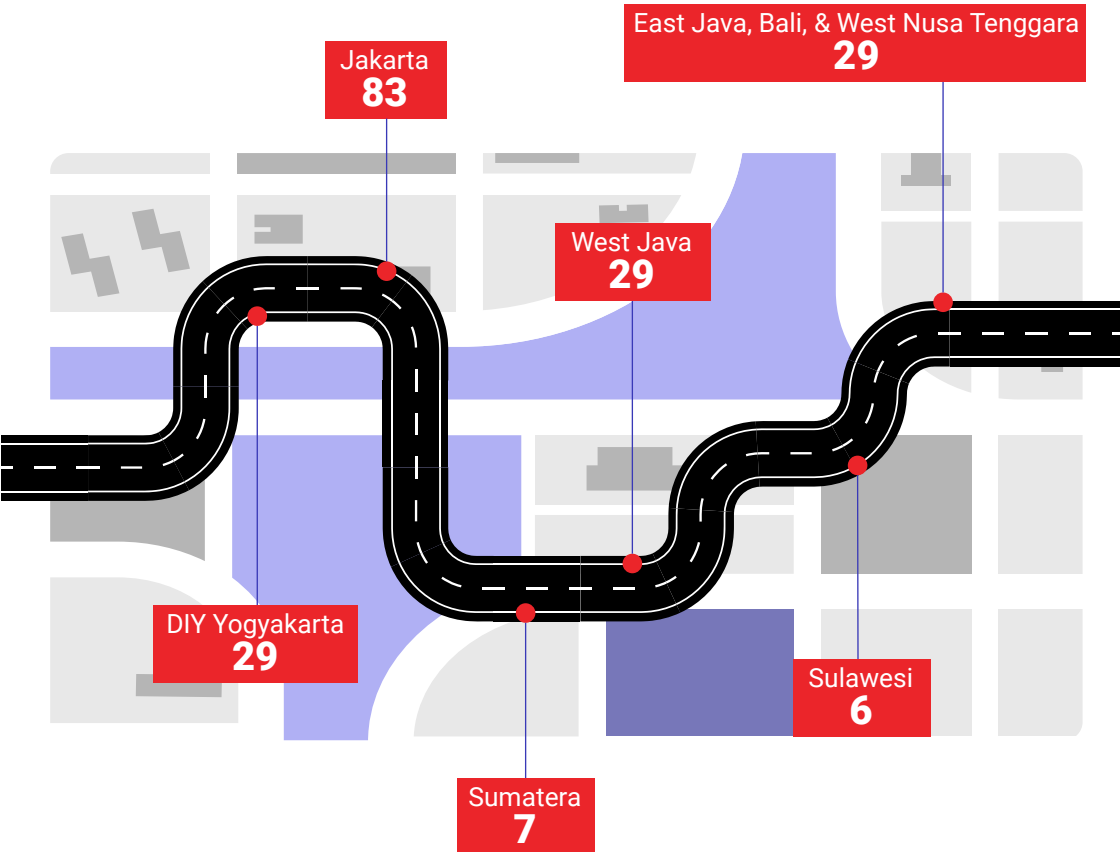
In addition to electric cars, Indonesia plans to develop an electric vehicle ecosystem such as electric vehicle batteries. Indonesia even plans to become the world's battery center because it has abundant raw materials, e.g. nickel, cobalt, manganese, and ferronickel for lithium battery manufacturing.

Several areas producing these raw materials are at Halmahera, Morowali (Central Sulawesi), Bangka Belitung, and the Pegunungan Tiga Puluh (Aceh). The government also continuously supports PLN for investment and development of the SPKLU (Sistem Pengisian Kendaraan Listrik Umum/Public Electric Vehicle Charging System).



Number of SPKLU in Indonesia (September 2021) **187 units**

SPKLU distribution



44. What are the Efforts of the Indonesian Government in Supporting the Development of Clean Energy, Especially for the Younger Generation?

The Directorate General of New Renewable Energy and Energy Conservation of the Ministry of Energy and Mineral Resources held the Spark Indonesia 2022 “Acceleration Transition, Igniting Innovation” event designed by New Energy Nexus Indonesia to support the growth and development of a conducive ecosystem in the context of developing business ideas and innovations in the field of clean energy.

The program includes incubation, acceleration, and funding for innovators, startups, and entrepreneurs in the clean energy sector in Indonesia. The series of Spark 2022 events consists of a hackathon, investment speed dating, exhibition, and workshop.





New renewable energy business potential in the future:



Biogas



Solar Power
Plants



Smart Grid



Electric
vehicle

The target of the Indonesian government in human development and mastery of science and technology towards Indonesia Maju 2045 (lit: Progressive Indonesia 2045)

The government has five educational development strategies for Indonesia Maju 2045. The five strategies are enhancement and equitable distribution of educational infrastructure, the role of the community in development, professionalism and learning methods, changes in school culture and reading, and vocational, entrepreneurship, and character education.

The government also added education development through culture as a noble value of the nation's culture and work ethic improvement. The goal is that Indonesia wants to become a center of world culture and civilization without ever losing its national identity amid globalization.





Indonesian Education Quality Improvement Target in 2045

	2015	2025	2035	2045
Average Length of Schooling (years)	8,3	9.5	10,7	12
Higher Education GPR* (%)	29,9	35	50	60
Work Force of High School and Higher Education Graduates (%)	39,3	50	70	90

GPR: Gross Participation Rate

45. What are the Government's Priority Agendas in the Education Sector During the G20 Presidency?

The Director-General of Teachers and Education Personnel (Ministry of Education, Culture, Research, and Technology), Iwan Syahril, as the Chair of the G20 Education Working Group, emphasized that G20 members need to work hand in hand to help the world overcome inequality in access to quality education in post-Covid-19 recovery.

There are four priority education agendas that Indonesia will raise in the G20 Education Working Group (EdWG). One of these agendas is closely related to the Indonesian culture of *gotong royong* (lit: mutual assistance), namely Solidarity and Partnership.



The Four Education Priority Agendas Infographic

Solidarity and Partnership:

Offer cultural wisdom of gotong royong (lit: mutual assistance) and cooperation in overcoming global education problems.



Universal Quality Education:

Encourage equal access and quality of education at all levels.



Digital Technologies in Education:

Increase in-dept discussions on issues regarding access, quality, and social justice in the education sector.



The Future of Work Post

Covid-19: Adapt and generate solutions in education to meet future challenges.



46. Why was Gotong Royong (Lit: Mutual Assistance) Chosen to be Adopted by G20 Countries in Overcoming Inequality in Access to Quality Education?

The culture of the Indonesian people in mutually assisting in overcoming difficulties together can be an inspiration to the world for the restoration of education.

Minister of Education, Culture, Research, and Technology Nadiem Anwar Makarim stated the value of mutual assistance or mutual assistance and support to achieve common goals by the theme of the G20 Indonesia Presidency, namely 'Recover Together, Recover Stronger!'





The Impact of the Pandemic on the Education Sector

The most severe impact of the pandemic in terms of education is learning loss. Iwan Syahril, the Chair of the G20 Education Working Group, seeks to produce a report with examples of best practices in the education sector from the G20 members, such as in Africa, Europe, Asia, America, and Australia.

Thus, the report can encourage the world on how to overcome inequality in access to quality education in post-Covid-19 recovery.

47. How is The Government's Efforts to Evenly Distribute Digital Technology in the Education Sector?

The Ministry of Education, Culture, Research, and Technology initiated the development program for a domestically produced laptop, the Merah Putih Laptop.

The Ministry of Education and Culture wants to reduce dependence on imports of technology, information, and communication (ICT) as well as empower domestic human resources by involving representatives from ITB, UGM, and ITS.

In producing this Domestic Component Level (DCL)-certified Merah Putih Laptop, the government has budgeted IDR3,7 trillion for procuring 431,730 laptop units in 2021. The target is to produce Merah Putih Laptop made of 40-50% locally manufactured components in 2024.



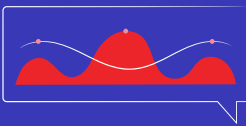
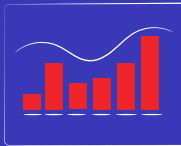


The Merah Putih Laptop

Budget **IDR3,7 trillion***

Procurement **431.730 units***

*2021 School Year



Planning Consortium

ITB, UGM, ITS

Target by 2024

DCL 40%-50%

Which country often acts as the reference for education because it practices the best system in the world?

According to Organization for Economic Co-ordination and Development (OECD) data, the three countries that rank the best in the education sector in 2021 are Japan, Estonia, and South Korea. Japan is a developed country in science, technology, and engineering, which has several forms of higher education institutions, so 50% of its citizens continue studying at university.

The Baltic nation of Estonia ranked third in mathematic and second in science. South Korea serves as a reference because the country has the most educated population globally. About 91% of South Koreans have completed secondary education, and 70% of the younger generation have tertiary qualifications.



10 Best Countries in the World for Education in 2021



Japan



Estonia



Ireland



Canada



Poland



Finland



Germany



New Zealand



South Korea



United States of America

The Minister of Communication and Information Technology Johnny G. Plate introduced actress **Maudy Ayunda as Government Spokesperson for the G20 Presidency of Indonesia at a press conference at the end of March.**

Maudy Ayunda holds a Bachelor of Arts in Philosophy, Politics, and Economics from the University of Oxford, England, as well as a Master of Business Administration and a Master of Arts in Education from Stanford University, USA.

Maudy Ayunda's appointment is because she is a polyglot and well-known by the younger generations. Hence, hoping to reach the wider public, especially the Millennials and Generation Z.





Primary Duties of Maudy Ayunda as the Spokesperson for the G20 Presidency of Indonesia:

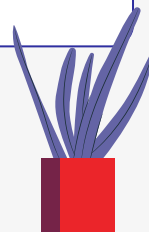
- 1 Disseminate information regarding the series of events of the G20 Summit in Indonesia, which will be attended by the leaders of the G20 members.
- 2 Communicate regular progress of Working Groups and Engagement Groups meetings as well as side events during the G20 Presidency of Indonesia to the public. Thus, the Indonesian people and the global community can keep up with the agenda's developments and substance of the G20 Presidency of Indonesia.

Efforts to Prevent Corruption in Indonesia are Carried Out Starting from the Smallest Organization and Involving All Stakeholders

Efforts to eradicate corruption continue to be carried out and updated by the Government of Indonesia. Education on anti-corruption starts from the smallest organizational scope: the family.

The formal education system applies to the anti-corruption course in three methods: an integrated model in subjects, outside learning through extra-curricular activities, and a culture or habituation model.

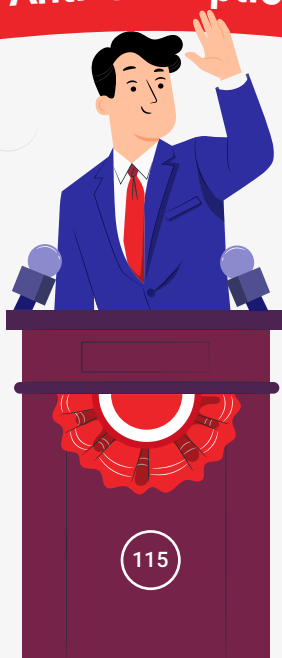
The three models are applied at various levels of education, starting from elementary to university. Furthermore, Indonesia Corruption Watch (ICW) and several educational institutions, including The CEC (lit: KPK), have created an Anti-Corruption Academy for the public.



Highlights from the President of the Republic of Indonesia at the Commemoration of World Anti-Corruption Day 2021:

- 1 Don't be complacent about eradicating corruption
- 2 Prevention of corruption must be done early on by the whole community
- 3 A more thorough and fundamental corruption eradication
- 4 *Asset Recovery and Increased Non-Tax State Revenue*

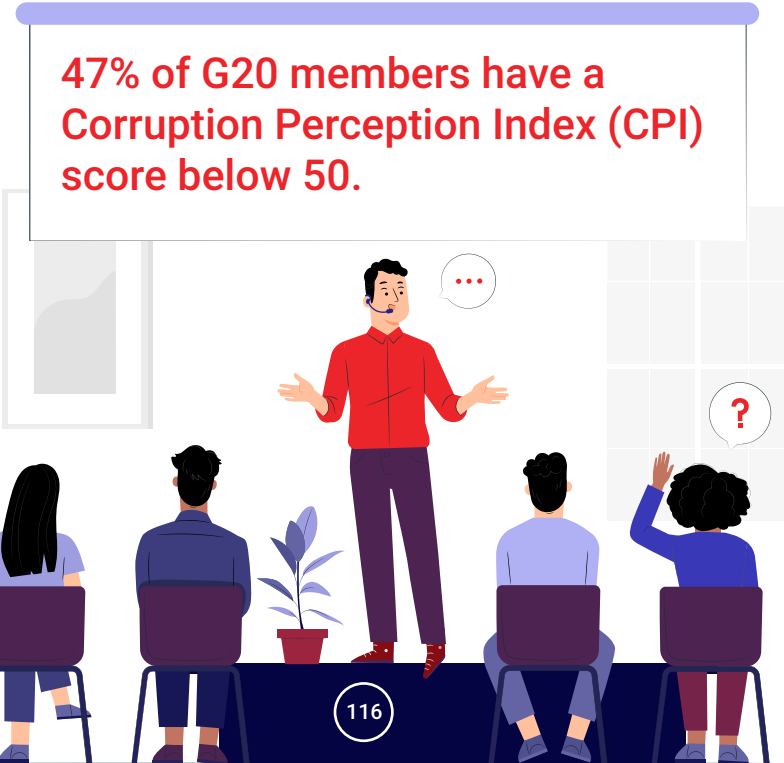
World Anti-Corruption Day



48. Why is the Anti-Corruption Topic an Important Discussion in the G20 Presidency of Indonesia?

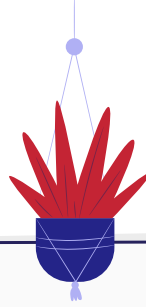
Coordinating Minister for Political, Legal, and Security Affairs Mahfud MD stated that corruption, which requires solutions for eradication globally with various forms of cooperation, is the enemy of all nations.

The Corruption Eradication Commission (CEC) also hopes that the G20 forum can be a momentum to increase efforts to eradicate corruption globally.



47% of G20 members have a Corruption Perception Index (CPI) score below 50.

The illustration shows a man in a red shirt standing and speaking to an audience of four people seated in purple chairs. A speech bubble with three dots is above the speaker. A grid of squares is on the right, with one square containing a question mark. A small potted plant is on the stage. A circular badge with the number 116 is at the bottom center.



Top 5 G20 Members with the Best CPI Score According to Transparency International as of 2021



Germany
Score: **80**



The United Kingdom
Score: **78**



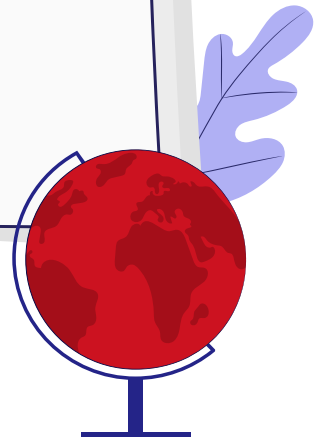
Canada
Score: **74**



Australia
Score: **73**



Japan
Score: **73**



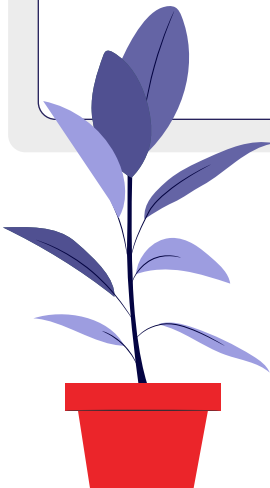
49. What are the Efforts of Indonesia Through the Corruption Eradication Commission (CEC) to Take Advantage of the G20 Presidency in Eradicating Corruption?



The appointment of Indonesia as the G20 Presidency is favorable to The CEC (lit: KPK) as the Chair of the Anti-Corruption Working Group (ACWG) to make an extensive contribution to efforts in eradicating global corruption.

| 4 G20 ACWG Priority Issue

- ✓ Increasing the Role of Audit in Combating Corruption
- ✓ Public Participation and Anti-Corruption Education
- ✓ Supervision of Professional Enablers in the Crime of Money Laundering
- ✓ Corruption in the Renewable Energy Sector





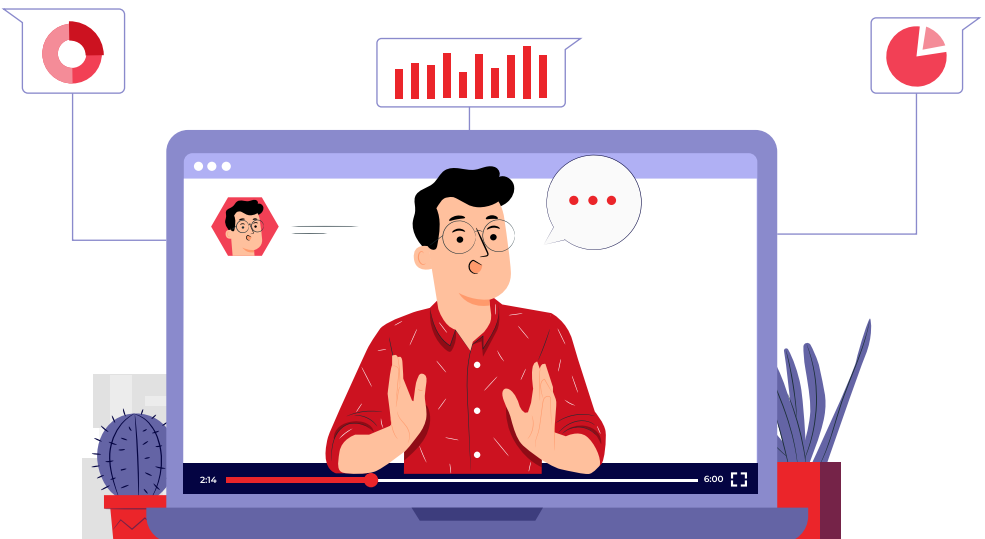
The CEC encourages the active role of legal professionals, such as advocates and lawyers, to prevent the occurrence of criminal acts of money laundering resulting from corruption.

The CEC proposes to include a review of the regulations and practices regarding the supervision of the legal profession's role related to laundering the proceeds of corruption in the result summary of the G20 ACWG.

50. What is the Role of the Young Generation in Efforts to Eradicate Corruption?

Anti-corruption education and public participation are the main agendas pushed in the G20 Presidency of Indonesia. The younger generation can participate in anti-corruption actions by enrolling in anti-corruption education and formal training available at all levels of education.

Furthermore, there is a workshop for candidates for Anti-Corruption Advisers. The Anti-corruption Counselor is an informal extension of the CEC as an agent of change that can reach all levels of society, so the implementation of anti-corruption education and eradication is more effective and efficient, both in government and society.





Students Can Become Anti-Corruption Counselors

Based on the CEC data as of December 2021, there have been 2.047 anti-corruption counselors and 228 integrity activists formed by the CEC. They consist of cross-professionals, including students, institutions, and organizations in 34 provinces throughout Indonesia.

To become CEC Advisers certified by the Professional Certification Institute, students must complete anti-corruption courses and e-learning on basic anti-corruption knowledge, have experience in counseling at least twice, and commit to anti-corruption action plans post-certification.

What is the Corruption Perceptions Index (CPI)?

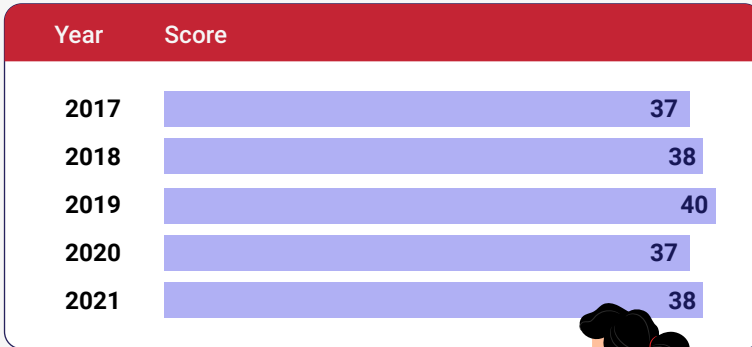


Transparency International is an international non-governmental organization that aims to fight injustice due to corruption.

One of Transparency International's annual publications is the results of the CPI Survey. The survey ranks 180 countries based on the level of public perception of corruption in public and political offices.

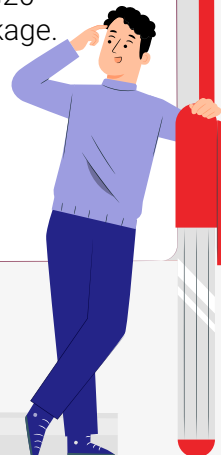
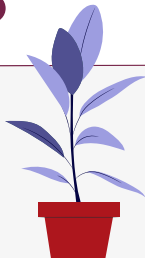
The CPI uses a scale of 0 (high corruption level) to 100 (low corruption level). The higher the CPI of a country, the lower the corruption in that country.

Corruption Perception Index of Indonesia



Communiqué of G20 Finance Ministers and Central Bank Governors Meeting on the global economy:

- ✓ Just access to vaccines for all countries.
- ✓ Increase access to health financing.
- ✓ Dialogue and joint action on pandemic prevention and preparedness.
- ✓ Deferment of foreign debt settlement.
- ✓ Provision of trust funds.
- ✓ Debt settlement of underdeveloped countries using the Common Framework.
- ✓ Global implementation of the G20 two-pillar international tax package.
- ✓ Improve domestic resource mobilization in developing countries.

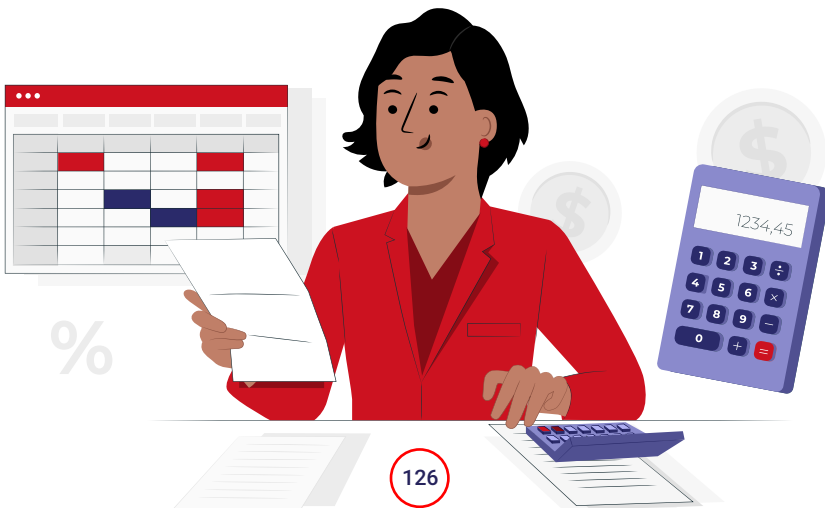


51. What is the Commitment of the Government of Indonesia to Maintain Public Health?

The government has been striving to get Indonesia out of the pandemic. As much as 6,2% of the State Budget for Fiscal Year 2021 or IDR169,7 trillion is allocated to the health budget. That figure is much higher than the 5% allocation in the constitution.

According to President Joko Widodo, the health budget is for vaccine procurement, increasing fulfilment, and distribution, nutrition improvement for pregnant and lactating women and toddlers, infectious diseases handling, and stunting reduction acceleration.

The government's focus on the health sector also continues in the State Budget for Fiscal Year 2022, with a health budget allocation of IDR256 trillion or 9,4% of the State Budget.





Six indicators of COVID-19 handling continuously improving

- 1 The nationwide weekly positive case trend fell for the seventh week in a row after the peak of the third wave.
- 2 National active cases have decreased significantly in the last six weeks.
- 3 A downward trend in the death toll for five weeks in a row.
- 4 The recovery trend is surging.
- 5 The National Bed Occupation Rate (BOR) has dropped significantly from 40% during the third peak to around 4% today.
- 6 The positivity rate (the number of people who tested positive for Covid-19) shows a significant downward trend.

52. What are the Objectives of the G20 Joint Finance and Health Task Force?

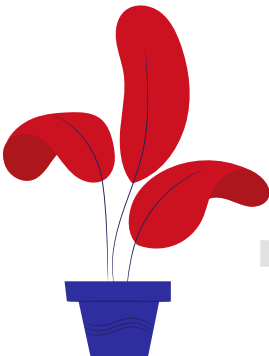
The Joint Finance and Health Task Force (JFHTF) is a working group involving representatives from the Ministry of Finance and the Ministry of Health who work together in generating policies to balance the handling of Covid-19 and economic recovery in each country.

The handling of Covid-19 is still carried out in the spirit of openness and global cooperation to create access to vaccines, Covid-19 testing tools, and personal protective equipment.

On the other hand, the G20 members continue to provide financial support and other incentives, especially for micro, small and medium enterprises (MSMEs).

Three Priority Agendas of the Global Health Architecture Reformation

- 1 Encourage nations worldwide to build a global health system.
- 2 Align global health protocol standards.
- 3 Develop global manufacturing and knowledge centers for pandemic prevention, preparedness, and response (PPR).

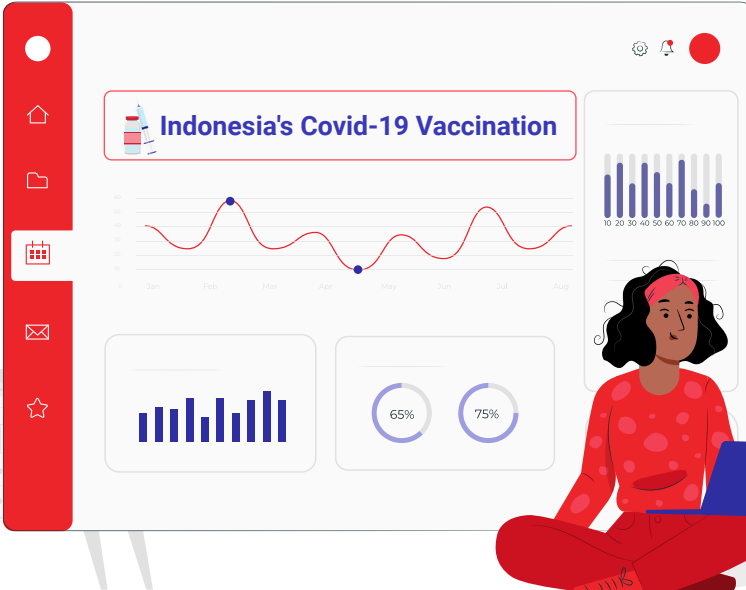


53. How is the Administration of the Covid-19 Vaccine in Indonesia?



Minister of Health Budi Gunadi Sadikin explained that the government had administered 392 million doses of the Covid-19 vaccine (first, second, and booster vaccines) to 198 million Indonesians.

The vaccination program has also improved the population's antibody levels to 99,2% as of April 2022, right before the Eid Al-Fitr holiday. Based on a serosurvey conducted by the Ministry of Health and the Faculty of Public Health, University of Indonesia, community antibody levels have increased from 86,6% in December 2021.



The Administration of the Covid-19 Vaccine in Indonesia

data as of 18 April 2022

1st Vaccination

198.248.066

2nd Vaccination

162.879.095

3rd Vaccination

31.348.872

(booster)

54. Does the Government Involve the Private Sector in Efforts to Handle Covid-19?

The Ministry of Health provides telemedicine services for self-isolating asymptomatic or mild Omicron variant COVID-19 patients who are 18 years old and reside in Greater Jakarta.

The patients have access to free teleconsultation services and prescription packages. Furthermore, the patients must have taken a PCR test at a laboratory affiliated with the Ministry of Health's New All Record (NAR) system to be eligible for the free service. Currently, 17 telemedicine platforms are collaborating with the Ministry of Health.

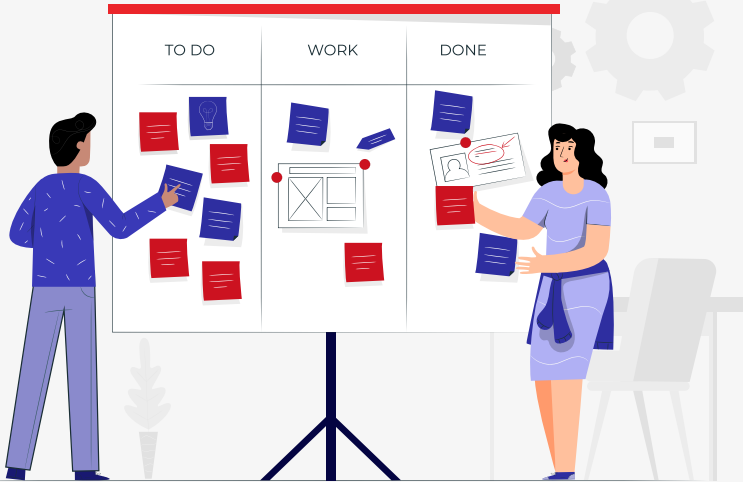


Prevention of stunting as an effort to achieve Indonesia Emas 2045

Stunting is a nutritional deficiency in infants in the first 1.000 days of life, which causes delays in brain development, physical growth, and cognitive skills. Survei Status Gizi Balita Indonesia (SSGBI) (lit: the Indonesian Toddler Nutrition Status Survey) shows that the stunting rate in Indonesia continues to decline every year, so the government is optimistic about targeting a 14% reduction in 2024.

Badan Kependudukan dan Keluarga Berencana Nasional (BKKBN) (lit: the National Population and Family Planning Agency) has a strategic program through Rencana Aksi Nasional Percepatan Penurunan Stunting (RAN PASTI) (lit: the National Action Plan for the Acceleration of Stunting Reduction).





| National Stunting Rate:

2019 **27,7%** 2021 **24,4%**

| Government Efforts to Prevent Stunting:

- 1 Assistance program to ensure the nutritional and health status of prospective couples of childbearing age.
- 2 Nutritional status and pregnancy readiness examinations.
- 3 Data checking, coaching, and supervision of the stunting prevention.

President Jokowi Encourages

G20 Members to Achieve the Sustainable

Development Goals by 2030

During a speech in La Nuvala, Rome, Italy, Indonesian President Joko Widodo said that the G20 members need to focus on pursuing the Sustainable Development Goals (SDGs) targets.

The focus includes three things, first, helping the most vulnerable countries and communities. Second, strengthen global partnerships to help finance and access technology for developing countries.

Third, increase the capacity for adaptation and resilience to future shocks and uncertainties, especially in the health sector, fiscal capacity, and capacity for planning and implementation of development.



**SDGs
2030**



The Challenges of Sustainable Development Goals 2030

- 1 Equal access to vaccines.
- 2 Increasing rate of the global extreme poverty from 7,5% in 2021 to 9,4%.
- 3 Debt Service Suspension Initiative (DSSI) and additional allocation of Special Drawing Rights (SDRs) equivalent to USD650 billion for low and middle countries.
- 4 The financing gap widens from USD2,5 trillion/year to USD4,2 trillion/year.
- 5 The high risk of lost generation in education.

55. What is the Government of Indonesia's Commitment to Alleviating Poverty to Achieve the SDGs?

Vice President K.H. Ma'ruf Amin, as the Head of Tim Nasional Percepatan Penanggulangan Kemiskinan (TNP2K) (lit: the National Team for the Acceleration of Poverty Reduction), stated that the current government's focus is to target zero extreme poverty by 2024, following President Joko Widodo's instructions.

This target is six years ahead of the target for the SDGs related to poverty alleviation set in 2030.

TNP2K, which consists of Ministries, Institutions, and Local Governments, has implemented several programs divided into two main groups, namely the program group to reduce the burden of spending on low-income households and the program group to increase the productivity of the poor.



Program Keluarga Harapan (PKH)

The PKH (lit: Family Hope Program) has succeeded in reducing poverty in Indonesia. The government will continue this program in 2022 with a budget of IDR28,7 trillion targeting 10 million Keluarga Penerima Manfaat (KPM) (lit: Beneficiary Families).

Goals and Amount of Assistance for PKH 2022:

- ▶ **Pregnant/postpartum women** receive IDR3 million per year.
- ▶ **Early Childhood 0 to 6 year-olds** receive IDR3 million per year.
- ▶ **Elementary school/equivalent students** receive IDR900.000 per year.
- ▶ **Junior high school/equivalent students** receive IDR1,5 million per year.
- ▶ **High school education/equivalent students** receive IDR2 million per year.
- ▶ **People with severe disabilities** receive IDR2,4 million per year.
- ▶ **Seniors** receive IDR2,4 million per year.

56. Does the Kartu Prakerja (lit: Pre-Employment Card) Program Support the Government Achieve the SDGs?



Kartu Prakerja is a stimulus program from the government to restore the economy implemented in 2020. The Kartu Prakerja is a career competency development program aimed at job seekers, laid-off laborers, and workers who need competency improvement.

Kartu Prakerja Program is part of the Pemulihan Ekonomi Nasional (PEN) (lit: National Economic Recovery) Program for the social protection sector. UNDP Representative for Indonesia Norimasa Shimomura appreciated the Kartu Prakerja program and assessed that the program supports the achievement of the Indonesian government's SDGs agenda.



Presisi Indonesia Research: The Benefits of Kartu Prakerja Program

- 1 Kartu Prakerja program has effectively increased the beneficiaries competence, productivity, competitiveness, and entrepreneurship.
- 2 Effective in creating an equal distribution of human resource competencies in Java and outside Java.
- 3 Increase the wages of female workers while narrowing the wage gap between male and female workers in Indonesia.
- 4 Kartu Prakerja beneficiaries who were unemployed experience a 31,6% wage increase when re-entering the workforce.
- 5 The Presisi Indonesia surveyed 2.156 Kartu Prakerja beneficiaries and non-recipients from September to October 2021.

57. What is the Evidence of the Government of Indonesia's Seriousness in Managing Climate and Environment Change?

When speaking at the G20 Summit in Rome, Italy, Indonesian President Joko Widodo mentioned the importance of Indonesia as the world's largest rainforest. The President said that Indonesia had rehabilitated three million hectares of critical land from 2010 to 2019.

Indonesia also targets a net carbon sink for the land and forest sector by 2030 and a net-zero emission in 2060 or sooner. The development of the Net Zero area, utilizing new renewable energy and producing green products, began during the construction of the 13,200-hectare Green Industrial Park in North Kalimantan.

Indonesia is also in the final stages of finalizing carbon pricing regulation to meet the Nationally Determined Contributions (NDCs) target commitments.





Important Points from the 1st Energy Transitions Working Group Meeting in Yogyakarta:

- 1 Shared Commitment to Achieve Net Zero Emission (NZE).
- 2 Realizing the SDGs by 2030.
- 3 Technology Collaboration and Partnership.
- 4 Strengthening Energy Supply Chain Security and Resilience.

How Can the Government Achieve the Sustainable Natural Resources and Environmental Management Targets?



The government strives to realize the Paris Agreement to achieve SDGs 2030 commitments by reducing greenhouse gases. The government's effort includes the Rencana Usaha Penyediaan Usaha Tenaga Listrik (RUPTL) (lit: Electric Power Supply Business Plan) of Perusahaan Listrik Negara (PLN) 2021-2030.

As stated in the plan, the government will not only issue permits for the construction of new electric steam power plants except those that have committed to construct, but also provide significant opportunity for the development of renewable energy, especially biomass.

Steps to Implement Biomass in the New Normal Era

- 1 Optimization of domestic biomass development and export delay.
- 2 Research and development of biomass-producing crop productivity.
- 3 Maximize the contribution of domestic experts and academics.
- 4 Biomass development based on local potential.
- 5 Utilization of marginal and degraded land in the development of energy crops superior species.
- 6 Development of collaboration and institutional patterns with digitization.



The G20 Presidency of Indonesia Plays an Extensive Role in Leading Global Action towards a Powerful, Sustainable, Balanced, and Inclusive Recovery

Global economic conditions and geopolitical tensions are the challenges during the 2022 G20 Presidency of Indonesia. The G20 Summit is a multilateral forum with a core of collaboration in discussing joint efforts to manage world problems, namely pandemics, climate change, protection of low-income countries, and the propagation impacts of geopolitical conflicts.

Indonesia guarantees the implementation of the discussion of the G20 agenda based on the spirit of cooperation and multilateralism, following the principles of the constitution of Indonesia to participate in a world order based on independence, boundless amicability, and social justice by international law.



Important Points from the 2nd IMF-World Bank Group 2022 and 2nd Finance Minister and Central Bank Governors (FMCBG):

- 1** The Establishment of Resilience and Sustainability-Trust (RST).
- 2** The fulfillment of the global ambition of USD 100 billion from voluntary contributions allocated to countries in need.
- 3** The importance of Multilateral Development Banks (MDB) for development in vulnerable countries.

58. What are the Benefits of the G20 Side Event on the Community?



The Minister of Tourism and Creative Economy Sandiaga Uno is targeting the G20 side events related to tourism and the creative economy to create 10.000-15.000 new jobs during the G20 Presidency of Indonesia.

Not only concentrated in Bali, but the Ministry of Tourism and Creative Economy also held G20 side events in several other cities, such as Solo, Central Java, Labuan Bajo, East Nusa Tenggara, and Jakarta Capital Special Region. The G20 side events also serve as a medium for promoting the country's tourism sector and creative economy globally.



| Waringin Peak Creative Hub

Location Waringin Peak, Labuan Bajo, East Nusa Tenggara.

Area 1.700 meter square meter.

House of Tenun Culinary kiosk areas, exhibitions, and various craft sub-sector workshops.

House of Souvenirs Exhibition space that also sells souvenirs made by local creative economy people.

59. What is the Symbol and Function of Waringin Peak Creative Hub?



The Minister of Tourism and Creative Economy Sandiaga Uno said Waringin Peak was a center of collaboration and information exchange among creative economy people that hopefully drives multiplier effects in other sectors.

The stakeholders have thoroughly prepared the Waringin Peak Creative Hub to stimulate the creative economy in Labuan Bajo.



Waringin Peak Creative Hub Preparations in Welcoming G20

- 1 Increase the number of hotels and restaurants for tourists.
- 2 Arrange the Waringin Peak Creative Hub's floor to showcase the creativity, aesthetics, and local wisdom of the Manggarai people.
- 3 Provide assistance to creative economy people in developing governance, service improvement, and product marketing.
- 4 Ensure 4G and 5G connections are available all over tourist sites in Labuan Bajo by improving internet and communication network infrastructure.
- 5 Organize festivals and competitions such as Flores the Singing Island, Flores Writers Festival, and the Ideathon #RinduLabuanBajo, also known as the idea competition.



60. What is the Strategy for the Development of Super-Priority Destinations (SPD) of Borobudur?

Strengthening the supply chain is one of the strategic issues of the Ministry of Tourism and Creative Economy (Kemenparekraf) or Tourism and Creative Economy Agency (Baparekraf) at the Borobudur SPD by encouraging the use of products made by local micro, small, and medium enterprises (MSMEs).

Henkyhe Hotma Parlindungan Manurung, Deputy for Industry and Investment at Kemenparekraf/Baparekraf, said that this supply chain strengthening was an effort to support MSMEs in recruiting more than 97 percent of the workforce in Indonesia and integrating a 60,4% investment.





Borobudur Temple

Supply chain strengthening includes the:

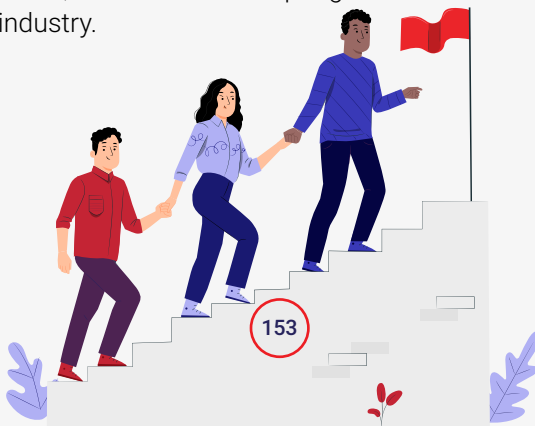
- The supply stage
- The demand stage
- The matchmaking stage
- The sustainable supply chain stage

Efforts by the Ministry of Tourism and Creative Economy in Equipping Excellent Human Resources in the Tourism and Creative Economy Sectors

The Ministry of Tourism and Creative Economy has six State Universities, namely the Politeknik Negeri Pariwisata (Poltekpar), spread across Bali, Medan, Makassar, Palembang, Lombok, and Bandung (Sekolah Tinggi Pariwisata Bandung).

Poltekpar opens several study programs such as a 3-year Diploma in Culinary Management, a 4-year Diploma in Hospitality Administration, a 4-year Diploma in Tourism, and a 4-year Diploma in Event Management and MICE.

The Minister of Tourism and Creative Economy Sandiaga Uno said Poltekpar is one of the government's efforts to generate quality, creative, and innovative human resources in the tourism sector in the future. Based on the Ministry of Tourism and Creative Economy data, 30% of Poltekpar graduates are entrepreneurs, and 70% of Poltekpar graduates work in the tourism industry.





The Contribution Target of the Tourism Sector to the GDP

	2021	2022	2023	2024
Domestic Tourism Value (billion USD)	4,8-8,5	10,6-11,3	16,9-18,9	21,5-22,9
GDP Contribution (%)	5	5,2	5,3	5,5
Creative Economy Products Export Value (billion USD)	17,45	25,33	26,46	27,53

Actual Government Support in the Implementation of Economic Digitalization in Indonesia

The government, Financial Services Authority (lit: Otoritas Jasa Keuangan/OJK), and Bank Indonesia have committed to support the development and contribution of the fintech industry to strengthen the national digital economy through regulations that can stimulate digital financial service innovation and provide optimal protection to the public as the users.

The fintech industry companies are expected to accelerate the financial inclusion program launched by the government.





Fintech Contribution to Government Programs

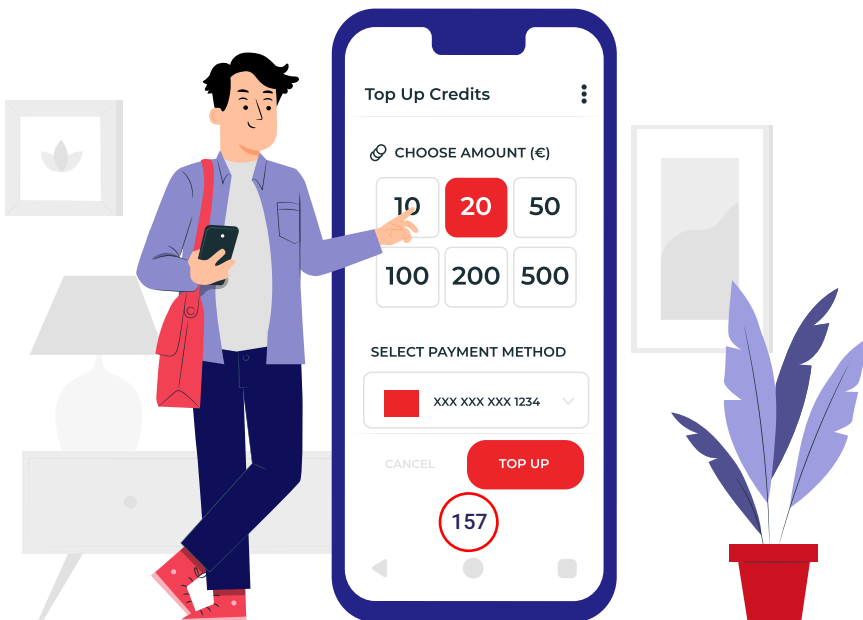
- 1 Online retail of Surat Berharga Negara SBN (Government Bonds) sales through fintech increased from 7,9% for ORI16 in 2019 to 11,9% for ORI17 in 2020.
- 2 Non-cash social assistance distribution during the pandemic.
- 3 Distribution of the Kartu Prakerja (lit: Pre-Employment Cards) prompts 5,3 million recipients to open a bank or e-wallet account after joining the program.
- 4 The adoption of e-money for public transportation payment.
- 5 Online tax reporting and payment.

61. Why Does the G20 Discuss Issue Regarding Access to Digital Finance for the Young Generation?

Indonesia has opened the Youth 20 (Y20) 2022 2nd Pre-Summit in Lombok, West Nusa Tenggara, discussing methods to increase youth awareness of digital finance.

The Y20 is a discussion platform that provides real solutions to overcome internet access and digital literacy inequality. The Y20 Indonesia 2022 Co-Chair Budy Sugandi said digital financial services were sprouting amid the Covid-19 pandemic. Unfortunately, a large number of the world's population has not yet experienced the benefits of the digital economy.

Moreover, a Y20 Indonesia and Cint survey reported that 61% of young people in the G20 countries have difficulty accessing the internet, including unstable and slow connections.





| The Y20 Summit Focus

- 1 Highlight government policies in increasing digital financial awareness among the younger generation.
- 2 People, especially in developing countries, still rely on cash.
- 3 Advances in digital technology contribute positive impacts on the younger generation, yet several public frameworks remain ambiguous. Government intervention, especially in G20 countries, needs to be an example.

62. What is Indonesia's Aspiration Regarding Digital Financial Literacy in the G20 Summit?



Indonesia expects the G20 Summit to provide efficient solutions to improve digital financial literacy. The World Bank survey predicts the financial inclusion index will reach 68,52% in 2070 and 48,86% in Indonesia.

According to Minister of Finance Sri Mulyani, this indicator highlights the need to accelerate financial inclusion globally, so it is also one of the focuses of the G20 Presidency of Indonesia.

To Support the Financial Inclusion Issue in the G20 Presidency of Indonesia in 2022, The Government will Focus on Three Things:

- 1 Framework for implementing high-level principles on digital financial inclusion.
- 2 Policy options to utilize digital and innovative financing services for small and medium enterprises, including financial services beyond credit products from formal financial institutions and fintech as an alternative to financing the business.
- 3 Implementation of ethical policies to improve financial services for small and medium enterprises.



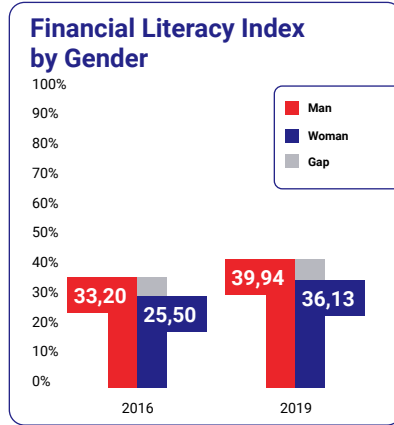
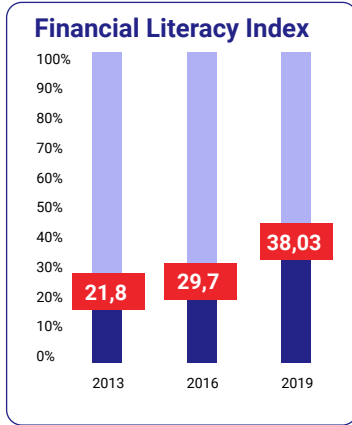
63. Efforts to Introduce Financial Literacy through Gamification

The 2019 Survei Nasional Literasi dan Inklusi Keuangan (SNLKI) (lit: National Survey of Financial Literacy and Inclusion) reported that the financial literacy index reached 38,03%, and the financial inclusion index reached 76,19%.

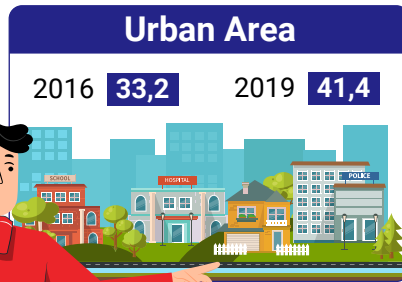
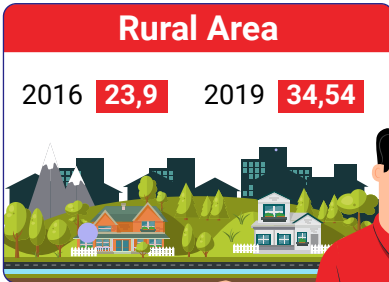
The accelerated adoption of post-pandemic digital transactions and the increasing internet access among Generation Z presumes that gamification is an appropriate alternative to advance financial literacy. Several digital applications and services in the financial sector have utilized gamification to encourage users to save, manage budgets, and increase financial literacy.

Gamification can also be used to reach the people in the society who have not had any experience with comprehensive financial product information.





Financial Literacy Index by Region



The Government Implements Five Special Strategies in Utilizing the Demographic Bonus until 2045



Until 2045, the productive young generation will dominate the population structure of Indonesia. Therefore, the Coordinating Minister for Human Development and Cultural Affairs has implemented five strategies.

The first is to improve the population quality through health and education interventions starting during the gestation period, including Pos Pelayanan Terpadu (lit: Integrated Service Post), or Posyandu, for growth and development.

Second, equitable access to education through 12-year compulsory education supported by the Kartu Indonesia Pintar (lit: Smart Indonesia Card), the Bantuan Operasional Sekolah (lit: School Operational Assistance), or BOS, and school revitalization, to name a few.

Third, increasing access for high school graduates to continue to higher education.

Fourth, helping university graduates to get jobs through the Kartu Prakerja (lit: Pre-Employment Card) Program.

Fifth, to provide social protection, health, security, and convenience to realize the welfare of the elderly.



Bank Indonesia is Testing Cross-border Payment with Neighboring Countries

Bank Indonesia has conducted a cross-border QR payment trial with Malaysia and Thailand, which allows consumers and merchants in both countries to make and receive payments for goods and services via QR Code.

The cross-border QR payment allegedly can increase MSME transactions because it eases foreign consumers to transact when buying local products. Likewise, foreign tourists will only need to use the cross-border QR payment if they want to transact while visiting Indonesia.

The Government Implements Five Special Strategies in Utilizing the Demographic Bonus until 2045



Until 2045, the productive young generation will dominate the population structure of Indonesia. Therefore, the Coordinating Minister for Human Development and Cultural Affairs has implemented five strategies.

First is to improve the population quality through health and education interventions starting during the gestation period, including Pos Pelayanan Terpadu (lit: Integrated Service Post), or Posyandu, for growth and development.

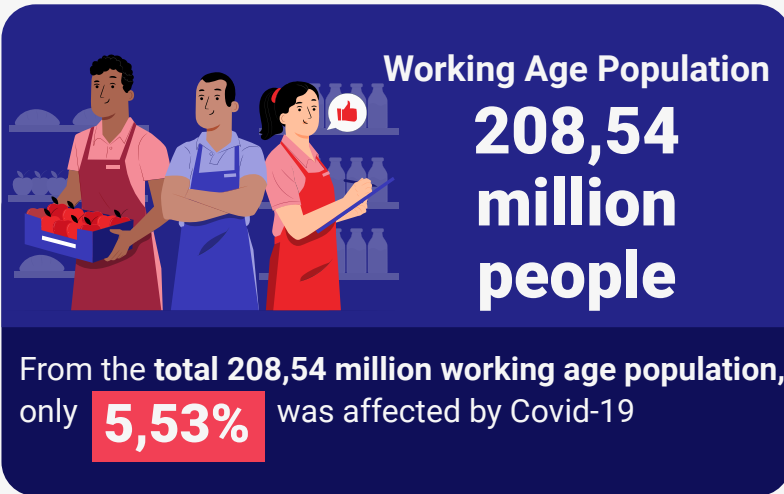
Second, equitable access to education through 12-year compulsory education supported by the Kartu Indonesia Pintar (lit: Smart Indonesia Card), the Bantuan Operasional Sekolah (lit: School Operational Assistance), or BOS, and school revitalization, to name a few.

Third, increasing access for high school graduates to continue to higher education.

Fourth, helping university graduates to get jobs through the Kartu Prakerja (lit: Pre-Employment Card) Program.

Fifth, to provide social protection, health, security, and convenience to realize the welfare of the elderly.

Labor Force Profile in Indonesia as of February 2022



**0,96 million
people**

are unemployed due to Covid-19

**0,55 million
people**

are not in the workforce due to
Covid-19

**0,58 million
people**


are unemployed due to Covid-19

**9,44 million
people**

work and experience reduced working
hours due to Covid-19

64. What Are the Benefits of the G20 Presidency of Indonesia for the Employment Sector?

As the Head of the Employment Working Group (EWG), the Ministry of Labor held the second meeting on 10-12 May 2022 in Yogyakarta.



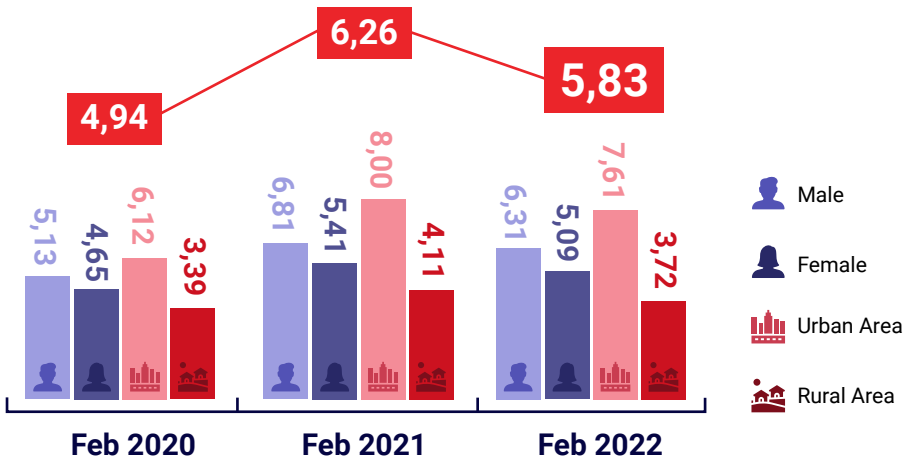
During the meeting, the Ministry of Labor discussed two priority issues. First, sustainable job creation towards a changing working world, through a focus on entrepreneurship and small and medium enterprises (SMEs).

The second priority issue discussed was the labor protection adaptation for more effective protection and increased resilience for all workers.

Previously, at the first EWG Meeting, which was held virtually in Jakarta, discussions were held on the issue of protecting workers with disabilities and strategies for providing competent workers.



Employment Profile in Indonesia as of February 2022



In percentage

The Open Unemployment Rate (OUR) decreased by 0,43% points compared to February 2021

65. What Are the Government Policies that Support the Advancement of the Indonesian Entrepreneurs?

The government targets the entrepreneurship ratio to reach 3,95% in 2024. To achieve the target, the government has prepared various supports in the form of access to affordable financing training and mentoring programs for MSMEs advancement.

For example, due to the constraints of limited working capital, the government provides access to cheap funds such as the Kredit Usaha Rakyat, or KUR, (lit: People's Business Credit) with an interest rate of 3%.



The Ministry of Cooperatives and SMEs, or KemenKopUKM also has several programs to boost the entrepreneurship ratio, such as the incubator institutions and business incubation development, digital transformation of Koperasi dan Usaha Kecil Menengah, or KUKM, (lit: Cooperatives and Small and Medium Enterprises), redesigning the Pusat Layanan Usaha Terpadu KUKM, or PLUT KUKM, (lit: KUKM Integrated Business Service Center) Program, the Entrepreneur Financial Fiesta Program, and the 2022 Patenpreneur, Pahlawan Tumpuan Ekonomi Negeri (lit: Heroes of the National Economy) program.

The 2022 Patentpreneur Program is a national program to facilitate business actors obtaining business consultation and business assistance.

The Two Methods of Implementing the 2022 Patentpreneur Program

- 1** Business consulting aims to help entrepreneurs solve a specific problem by facilitating a consultation session with an expert.
- 2** Business assistance is structured coaching for two months to help entrepreneurs start or develop their businesses. In addition, there is an incubation carried out for six months by the KemenKopUKM in collaboration with 19 incubator institutions, including universities.



66. What Are the Efforts of Indonesia in Increasing Gender Equality in the Work Environment?



One of the agendas of the G20 Presidency of Indonesia is to reinforce women's leadership in companies or the private sector. The G20 Alliance for the Empowerment and Progression of Women's Economic Representation (G20 EMPOWER) alliance advocates for women's leadership by encouraging companies to promote gender equality in the work environment.

The Minister of Women's Empowerment and Child Protection Bintang Puspayoga stated that Indonesia strongly supports the results of the G20 Brisbane in 2014, which focuses on closing the work participation gap between men and women by 25% in 2025.



I Three Priority Issues at the G20 EMPOWER

- 1** Key Performance Indicators (KPI) accountability from the company to encourage leadership and strengthen the company's position in the work environment.
- 2** Efforts by the private sector and the government to continue encouraging and supporting the role of women in MSMEs as economic drivers.
- 3** Building women's future readiness in the digital economy.

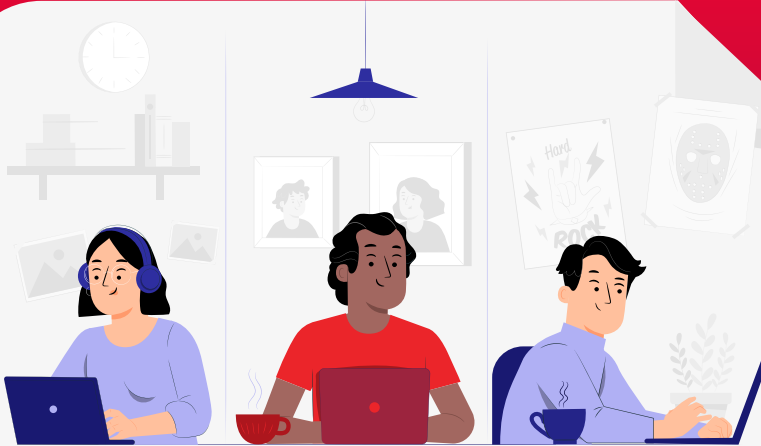
Why Should Indonesia Focus on Digital Economy Development in the Future?



The Minister of State Owned Enterprises Erick Thohir encourages today's young generation to become agents of change in facing the demographic bonus to achieve the Indonesia Maju 2045 (lit: Progressive Indonesia 2045) vision.

In 2030, Indonesia will need around 17 million workers in the digital economy. Therefore, the government will boost the digital literacy of the younger generation, including increasing work skills and competencies to support them be productive in an increasingly advanced digital ecosystem.

Based on official government estimates, Indonesia's digital economy is predicted to grow eight times from IDR632 trillion to IDR4.531 trillion in 2030. Automatically, the digital economy will be the driving force of the country's economy.



Digital Literacy National Movement Program

The Gerakan Nasional Literasi Digital Siberkreasi (lit: National Cybercreative Digital Literacy Movement) Program, or GNLD Siberkreasi, implemented by the Ministry of Communication and Information Technology has reached 12,5 million participants nationally by 2021.

This program will target 50 million participants from all elements of society by 2024. The GNLD Siberkreasi program has a basic level training program, Digital Talent Scholarship (DTS) Program for mid-level digital skills, and the Digital Leadership Academy (DLA) Program for high-level proficiency.

The training based on modules and curriculum targets the four pillars of:

1 *Digital Ethics*

3 *Digital Skills*

2 *Digital Safety*

4 *Digital Culture*

One of the Government's Targets in the G20 Presidency of Indonesia Is to Prove That the Country Is a Superpower in the Cultural Sector



During the 1st Senior Officials Meeting G20 Culture, the Ministry of Education, Culture, Research, and Technology aimed for sustainable recovery of the cultural sector.

Director-General of the Ministry of Education, Culture, Research, and Technology Hilmar Farid said that the two main objectives of the G20 Presidency in the cultural sector are to build global consensus for a sustainable new normal and initiate a global recovery agenda through the formation of a network of joint actions in the cultural sector.



- 1 Culture as an initiative for sustainable living.
- 2 Economic, environmental, and social impacts of cultural policies.
- 3 Cultural Commoning that promotes sustainable lifestyles.
- 4 Equitable access to cultural economy opportunities.
- 5 Mobilization of international resources for sustainable post-pandemic recovery through arts and culture funding.

67. What Does Indonesia Propose for Global Cultural Funding in the G20 Presidency?

Indonesia proposes global funding to help artists and other cultural workers affected by the Covid-19 pandemic. The proposed aid uses the approach of the Cultural Endowment Fund program, or Indonesiana Fund, recently launched by the Ministry of Education, Culture, Research, and Technology.

Indonesiana Fund expects to increase the opportunity for artists and other cultural workers to access funds to represent or channel their expressions through various channels.



With support from the G20 members, specially invited countries, and UNESCO, the 'Global Arts and Culture Recovery Fund' cultural funding platform can be realized and play a role in supporting the recovery of the cultural economy sector, particularly in developing countries affected by the pandemic.



The Impact of the Pandemic on Artists and Other Cultural Workers

The Covid-19 pandemic has had a long-lasting impact on the cultural ecosystem. Research by the Directorate General of Culture of the Ministry of Education, Culture, Research, and Technology in August 2021 found that 65% of cultural workers were no longer working and around 70% of public spaces and cultural organizations were inactive.

As a result, the income of cultural workers decreased by up to 70%. Indonesiana Fund is available for individuals, communities, organizations, or arts and cultural institutions by submitting proposals online on the Indonesiana Fund website. The Selection Committee and the Program Steering Committee, consisting of cultural arts activists, will select the eligible grantee.

68. About Dana Indonesiana



The Ministry of Education, Culture, Research, and Technology as well as the Ministry of Finance launched the **Cultural Endowment Fund or Indonesiana Fund**, which has a value of IDR 5 trillion.

Previously, the Ministry of Finance had allocated IDR1 trillion for Dana Indonesiana in 2020, then another IDR 2 trillion in 2021.

This allocation of funds was per Law Number 5 of 2017 concerning the Promotion of Culture.

This fund for arts and other cultural workers is called a cultural trust fund in the law.

| The Indonesian Fund Program includes:



1 Facilitation of the Cultural Sector, which includes:

- A Facilitation of the Cultural Sector 2022
- B Facilitation of the Cultural Sector Cultural Interaction.

2 Utilization of the Cultural Endowment Fund, which includes:

- A Institutional Support for Cultural Organizations.
- B Utilization of Public Space;
- C Strategic Activities;
- D Stimulator of Cultural Expression Activities.
- E Documentation of Maestro's Work/Knowledge.
- F Creation of Innovative Creative Works.
- G Work Assistance Fund for International Distribution.
- H Study of Objects for the Advancement of Culture.



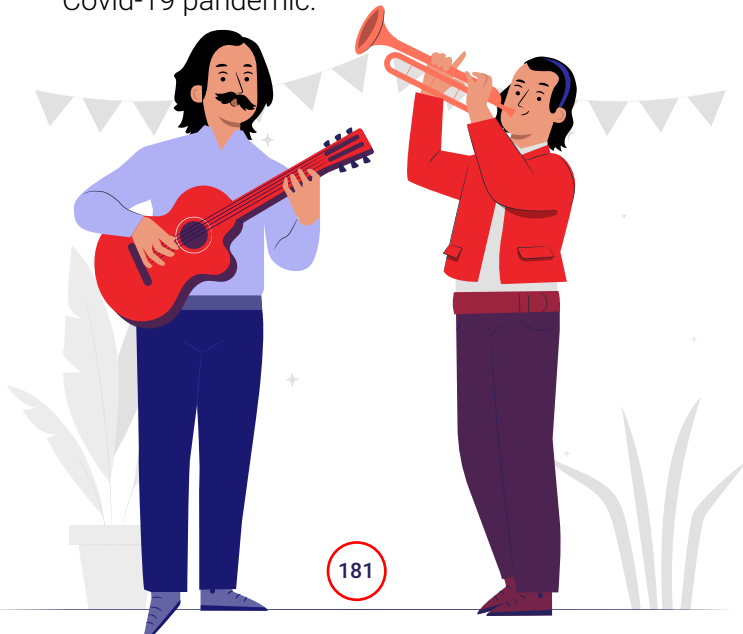
3 Cultural Workers Scholarship

69. What are the Benefits of the Culture Recovery Fund by the Government of the United Kingdom?

The Cultural Recovery Fund is a grant provided by the government of the United Kingdom. Since August 2020, the Culture Recovery Fund has flown to 5.000 British arts and cultural organizations, with a total value of GBP 1,57 billion (approximately IDR 2,45 trillion).

The Fund is available for theaters, museums, independent cinemas, studios and music venues, and other organizations affected by the pandemic.

The UK government provides the Funds to ensure support for festival and world-class art performance organizations managing difficult times during the Covid-19 pandemic.

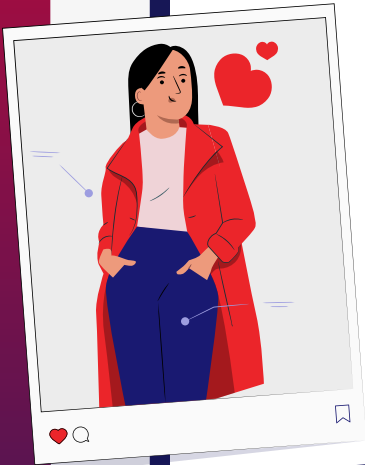




The Role of the Culture Recovery Fund by the Government of the United Kingdom

- ① Provide recommendations on the allocation of the largest and more complex grants.
- ② Make accountable financial decisions.
- ③ Provide assurance on smaller revenue grants under GBP1 million.
- ④ Oversee and measure the risk of program implementation.

Why is Fashion Trend a Topic of Discussion at the G20 Senior Officials Meeting?



In addition to being vulnerable to turmoil, the lifestyle of today's society is full of exploitative actions that harm the environment; one of them is the fast fashion trend.

Based on data from the United Nations Conference on Trade and Development (UNCTAD), the fashion industry is the second most polluting industry after petroleum. **Greenhouse gas emissions produced by the fashion industry are 1,2 billion tons per year.**

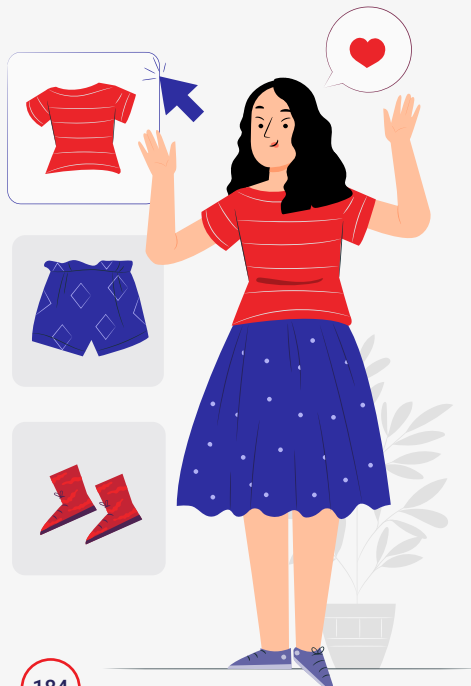




Director-General of Culture of the Ministry of Education, Culture, Research, and Technology Hilmar Farid stated that lifestyle topics, including fashion trends, were discussed in the G20 Senior Officials Meeting (SOM).

Before being brought to the G20 Culture Ministerial Meeting on 12-13 September 2022, the fast fashion trend must be studied and evaluated.

The evaluation will become the basis for developing sustainable agreements or policies by focusing on socio-ecological justice based on the diversity of cultural sources.



Indonesia Takes Part in Creating a Better World Through Mainstreaming Disaster Risk Reduction (DRR)



On 23-28 May 2022, Indonesia will host the 7th Global Platform for Disaster Risk Reduction (GPDRR) themed "Fostering Collaboration towards Sustainable Resilience."

GPDRR 2022 aims to improve DRR efforts through communication and coordination between stakeholders such as the government, the United Nations (UN), international organizations and institutions, non-governmental organizations, scientists, academics, and the private sector to share experiences in formulating strategic guidelines for implementing the DRR global framework or Sendai Framework for DRR 2015-2030.

Key Points of Presidential Regulation No. 75 of 2021 about Joint Fund for Disaster Management:



Source of Fund

- 1 State Revenue and Expenditure Budget
- 2 Regional Revenue and Expenditure Budget
- 3 Other legitimate sources of funds such as insurance claims, grants, other party collaborations, and trust funds



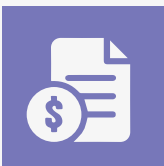
Fund development

- 1 Short-term investment
- 2 Long-term investment



Joint Fund Management includes

- 1 Fundraising
- 2 Fund development
- 3 Fund disbursement
- 4 Other assignments according to the minister



The management of the Joint Fund meets the following principles

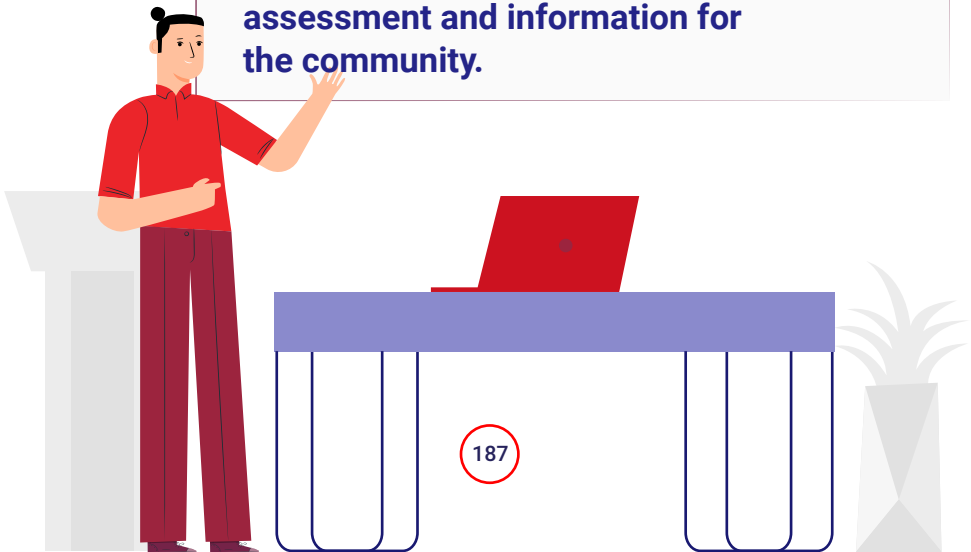
- 1 Circumspection
- 2 Transparency
- 3 Accountability
- 4 On time
- 5 On target

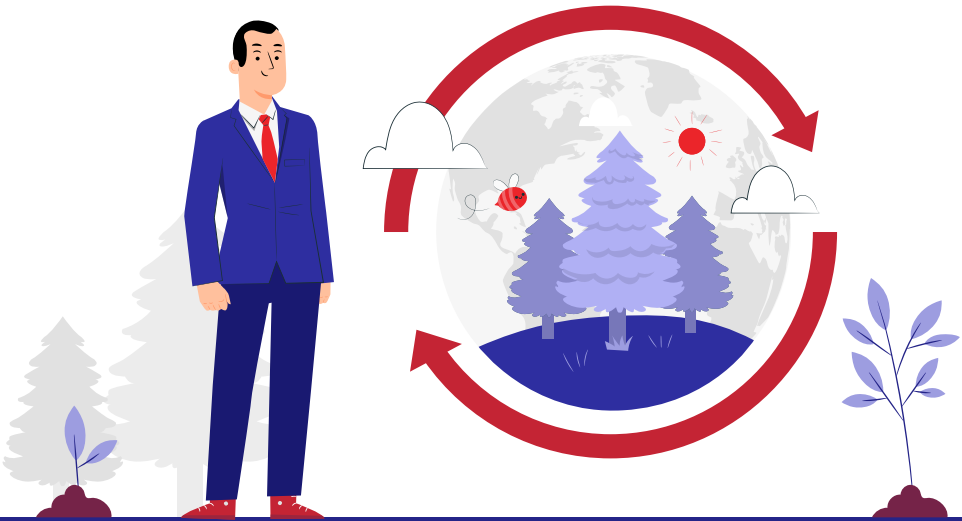
70. How Advanced Is the Implementation of the Sendai Framework?

In the 7th Global Platform Disaster Risk Reduction (GPDRR) event held in Nusa Dua, Bali, Director of the United Nations Agency for Disaster Risk Reduction (UNDRR) Ricardo Mena revealed that only 120 of the 187 countries that adopted the Sendai Framework had reported the achievements defined in the framework (Target G).

The Sendai Framework has been in effect since 2015, and all commitments are expected to be achieved by 2030.

The Sendai Framework puts forward seven global targets, including Target G, which substantially aims to increase the availability of and access to disaster early warning systems and disaster risk assessment and information for the community.





In this 2022 GPDRR forum, President of Indonesia Joko Widodo globally offers four concepts of sustainable disaster resilience, which are as follows

- ① The importance of strengthening anticipatory, responsive, and adaptive culture and disaster preparedness institutions in dealing with disasters.
- ② Every country should invest in science, technology, and innovation, including ensuring access to finance and technology transfer.
- ③ Build infrastructure that is resilient to disasters and climate change.
- ④ Shared commitment to implement global agreements at the national to local levels.

71. Why Does the United Nations (UN) Invite the G20 Members to Invest in Disaster Management?

The UN hopes that the G20 Presidency of Indonesia can encourage G20 members to increase investment in the disaster sector.

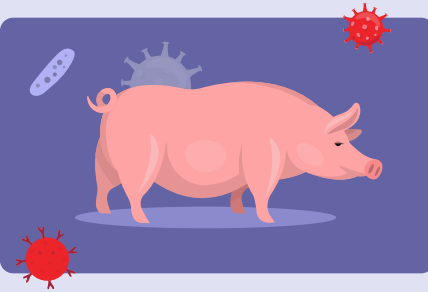
Various programs and activities can initiate disaster investment to reduce disaster risk at the national, regional, and global levels.



The UN wants the G20 to be an example and a driver in increasing disaster risk awareness and management globally because disaster mitigation programs require substantial funding, so joint efforts are needed.

Disaster risk does not only come from natural disasters or accidents, but also from disease outbreaks, such as the Covid-19 pandemic. Therefore, all countries must prepare countermeasures plans to minimize the impact of disasters.

| The World's Great Pandemic Disaster



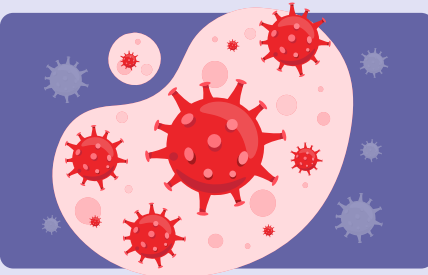
The Pandemic Swine Flu

- Year **2009-2010**
- Fatalities **200.000**



The Pandemic Ebola

- Year **2014-2016**
- Fatalities **11.300**



The Pandemic Covid-19

- Year **2019-Present**
- Fatalities **6,29 Million***

**As of May 30th 2022.*

72. What Are the Efforts of Sweden to Mitigate Disaster Threats in the Baltic Sea

At the G20 Working Group Meeting, Sweden, a friendly country to Indonesia, shared its experience managing the polluted and physically, biologically, and chemically damaged Baltic Sea.



The Swedish Marine and Water Management (SwaM), led by Jacob Granit, is the authority to restore and maintain marine and freshwater resources, including fisheries management.

Sweden has rearranged the use of the sea using the concept of a blue economy with the help of other countries in the region and the European Union.

For this effort, the International Labor Organization (ILO) noted that this new management of marine and land areas in an environmentally friendly and sustainable manner provides many opportunities and new quality jobs.



| The Baltic Sea Condition

Climate change has affected the entire earth, including the hidden Baltic behind the great Scandinavian peninsula.

As one of the oceans with the busiest commercial traffic globally, the Baltic Sea cannot escape the pollution from air, water, sewage and plastic waste.

The increasing heat wave in the Baltic makes water quality worse and threatens the ecosystem of the sea creatures. In addition, fishing management is also poor.

Rumah Resiliensi Indonesia

(lit: Indonesian Resilience House) was
at Adexco 2022 Disaster Solutions

Exhibition

Rumah Resiliensi Indonesia was at the Adexco 2022 Disaster Solutions Exhibition at the Bali Art Collection, Badung, Bali.

President Joko Widodo directly inspected several booths that showcased innovation in providing solutions and disaster mitigation as well as a platform to share knowledge and experiences in disaster risk management.

Rumah Resiliensi Indonesia is a collection of activists and communities, such as concerned community organizations, volunteers, and philanthropists regarding reducing disaster risk in Indonesia.



Stages of Disaster Management Mechanism in Indonesia:

1 Pre-disaster stage

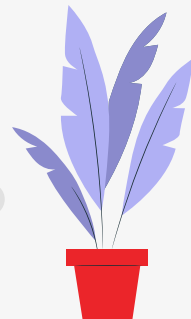
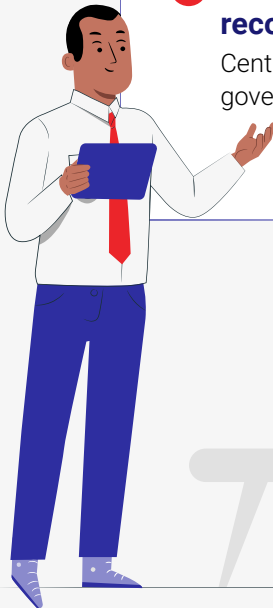
In the form of Ministry/Agency disaster contingency funds through the APBN (lit: State Budget).

2 Emergency response stage

The government allocates oncall through the APBN.

3 Post-disaster/rehabilitation and reconstruction stage

Central government grants to local governments.



The G20 Presidency of Indonesia Emphasizes the Importance of the Role and Cooperation of G20 Members in Maintaining World Stability



On behalf of the government of Indonesia at the 2022 World Economic Forum Annual Meeting (WEFAM) in Davos, Switzerland, the Coordinating Minister for the Economy Airlangga Hartanto, emphasized that the world should not turn a blind eye to global problems that concurrently occur and preoccupy with the Russia-Ukraine conflict.

Numerous other critical issues demand to be addressed globally, such as the climate change agenda and unequal vaccine distribution. Geopolitical affairs pose a challenge to the G20 Presidency of Indonesia because it affects the list of invited members, whereas it is paramount to maintain the integrity of the G20.

The Role and Functions of the G20 in the World:

2/3

Of the world's
population

85%

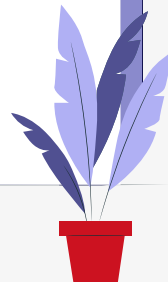
Of the world GDP

75%

Of the world trade

80%

Of the global
investment



73. What Are the Main Discussions of the 2nd Development Working Group (DWG) Meeting?

Director of Multilateral Funding of the Ministry of National Development Planning/Bappenas, as Co-Chair of the DWG, Raden Siliwanti emphasized that strengthening MSMEs is one of the priority issues of the 2nd DWG Meeting for economic recovery

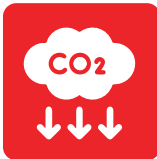


One of the support strategies carried out by the government of Indonesia, among others, is the regulation in 2021 that requires government institutions to ensure that at least 40% of the procurement of goods and services comes from local businesses specifically for the MSME group.

3 Focus of Indonesia at the 2nd DWG Meeting



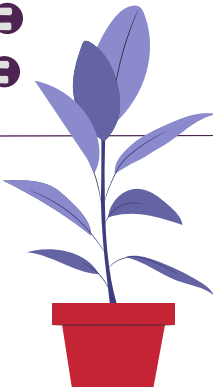
Empowerment of Micro,
Small, and Medium
Enterprises (MSMEs).



Adaptive social protection.




Green economy and blue
economy through Low
Carbon Development Scheme.



74. How Can Indonesia Meet Sustainable Development Goals (SDGs) Financing?

At the G20 Side Event, the government of Indonesia shared ways to find financing to support the achievement of SDGs in Indonesia.

The government supports the implementation of the Mixed Financing 2.0 scheme to attract commercial financing to meet sustainable development needs.



The objective of this scheme is to help countries meet the SDGs financing.

Mixed financing that has been in progress so far is in the form of a combination of investment from the government and the private sector in several SDGs programs.

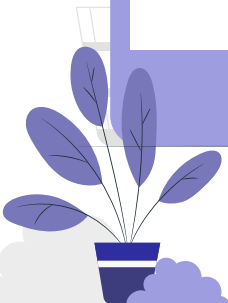
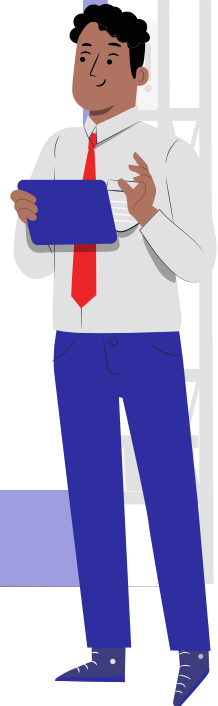


The Ministry of National Planning and Development (PPN/Bappenas) estimates that the financing gap for SDGs in Indonesia reaches

USD 1 trillion


or around **IDR 14.600 trillion**
(exchange rate of **IDR 14.600/USD**)

Meanwhile, global SDG financing has increased from **USD 2,5 trillion** to **USD 4,2 trillion** per year due to the Covid-19 pandemic.



75. The Importance of Public Speaking Skills for Tourism and Creative Economy Players

In Belitung, the Minister of Tourism and Creative Economy/Head of the Tourism and Creative Economy Agency (Menparekraf/Kabaparekraf) Sandiaga Salahuddin Uno encourages tourism and creative economy players to increase their competencies, especially public speaking skills.



According to him, competency building is not only about product quality but also the soft skills of tourism and creative economy players, especially the ability to communicate, which is accompanied by the 4AS work ethic.



4AS Work Ethic

Principle to achieve success by Sandiaga Uno, namely



Hard work



Through work



Smart work



Sincere work

Keris from Aeng Tong-tong Tourism

Village Is the Souvenir for the G20

Summit Side Event



The Aeng Tong-Tong Tourism Village, Saronggi District, Sumenep Regency, Madura, East Java, has been named by UNESCO as the only tourist village with the most keris masters globally.

Until now, the people of Aeng Tong-tong Village still preserve these craft products. Therefore, the Minister of Tourism and Creative Economy Sandiaga Uno plans to make the keris the souvenir at the G20 Summit side event.

As craft is a sub-sector of the creative economy, Menparekraf hopes millennials will be interested in keris, especially for souvenirs.

17

Sub-Sectors of the Creative Economy



Application



Architecture



Visual Communication
Design



Product Design



Interior Design



Photography



Music



Craft



Culinary



Fashion



Publishing



Film, Animation,
and Video



Advertising



Interactive Game



Performing Art



Fine Art



TV and Radio



What is the Role of the B20 Woman in Business Action Council in Empowering and Supporting Women in Business?

Chair of B20 Women in Business Action Council (WiBAC) Ira Noviarti said that the primary aspiration of WiBAC is that more women will lead, participate, and have access to better business and economic opportunities.



The world needs to make policies to involve more women in the sectors of the economy. To address this issue, WiBAC held the Accelerating the Inclusion of Women MSMEs in the Global Economy event on 17 June.



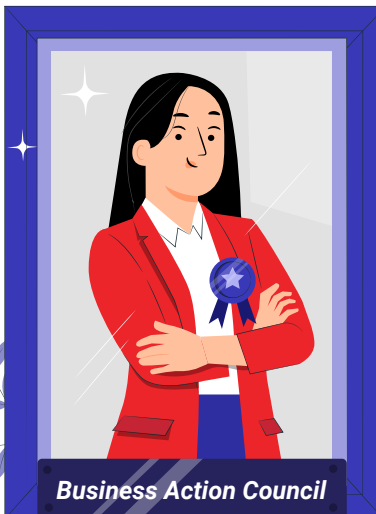
4 Focus Discussions on the Accelerating the Inclusion of Women MSMEs in the Global Economy:

- 1 Empower the ability of women entrepreneurs by developing an ecosystem that can provide access to financial assistance, regulations, and access to technical assistance for business players. As a follow-up, women's business networks on a global scale must continue developing.
- 2 Encourage women's digital and leadership skills; by accelerating women's access to the digital/STEM field and strengthening skills to take on leadership positions based on gender-based reports.
- 3 Promote a fair and safe work environment for all, starting by increasing job security for women workers in the informal economy sector, including in rural communities.
- 4 Develop systematic policies to avoid gender-based violence and assist victims of violence.

76. Is the Women in Business Action Council of B20 Indonesia a part of the G20 Presidency of Indonesia?

Women in Business Action Council of the B20 Indonesia is a group representing the business community of the G20 members that aims to advance the role of women in promoting inclusive, resilient, and sustainable economic growth.

The delegates involved are women who occupy executive or high-level positions in multinational companies and organizations in the G20 nations consisting of 151 business leaders from 26 countries and 19 industries. They represent more than 6,5 million business units.



Chair of Indonesia at the Women in Business Action Council is the President Director of Unilever Indonesia Ira Novianti and the CEO of Sintesa, Shinta Widjaja Kamdani.

Five Recommendations from the B20 Women in Business Action Council

1



Accelerate the availability of supporting infrastructure for women entrepreneurs and MSMEs in the finance, law, and entrepreneurship assistance sectors.

2



Build and strengthen the resilience of women-led businesses through cross-border collaboration.

3



Develop the digital capabilities of female workers in the science, technology, and digital fields.

4



Build a foundation that promotes fair and safe participation as well as leadership for women workers, especially in the informal sector.

5



Eliminate gender-based violence and support victims of gender-based violence in the workplace.

77. What is the Role of the Business World in Empowering Women, Especially Gender Mainstreaming?



Business players can play a role in empowering women in several actions, which are:

- Providing advocacy and socialization of gender mainstreaming to employees.
- Fulfilling women's labor rights, such as the right to give birth.
- Protecting women from all forms of violence in the workplace, such as sexual harassment.
- Furthermore, business players should maximize the women's potential to develop with the same career path as men.
- Pay the same wages between women and men, and involve women in decision-making and organizations such as trade unions.



The Policies of the Ministry of Women Empowerment and Child Protection in Overcoming Gender-Based Violence:



1 The Minister of Women Empowerment and Child Protection Regulation Number 5 of 2015 on Provision of Gender Responsive and Child Care Work Facilities in the Workplace.



2 Implementation of the Gerakan Pekerja/Buruh Perempuan Sehat Produktif (lit: Productive Healthy Women Worker/Labor Movement).



3 Establishment of a Rumah Perlindungan Pekerja Perempuan (lit: Women Workers Protection House) in Industrial Estates.



4 The Sahabat Perempuan dan Anak hotline (lit: Friends of Women and Children) at 08111-129-129 (SAPA 129).

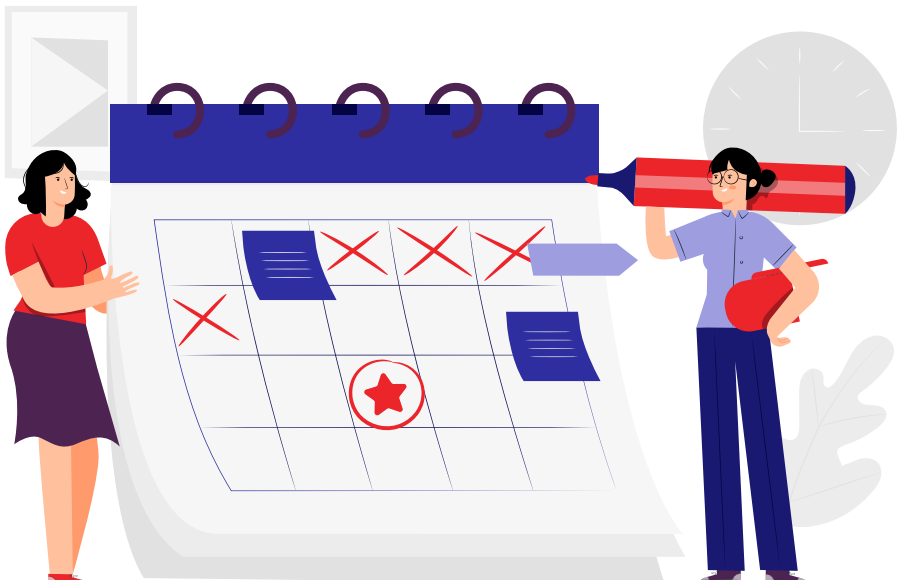


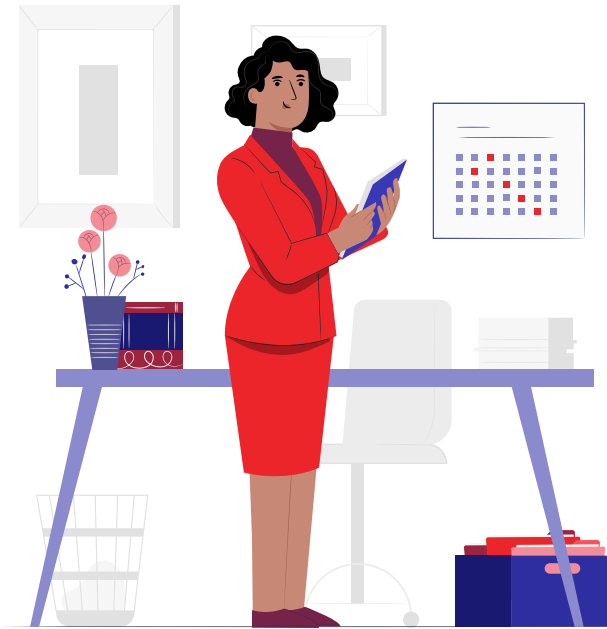
5 The Minister of Women Empowerment and Child Protection Regulation Number 1 of 2020 on Provision of Protection Houses for Women Workers in the Workplace.

78. How is the Journey of Strengthening the Role of Women in the Global Economy?

Based on the Women, Business, and the Law 2022 by World Bank, around 2,4 billion women of productive age are still experiencing inequality in obtaining economic opportunities. Furthermore, regulations in 178 countries still limit women's full access to economic activities.

The report also identifies that as many as 86 countries still apply restrictions on access to work for women, and as many as 95 countries do not guarantee equal pay for work for women. economic inclusion for women.





The good news is that the World Bank noted that there were still improvements in women's equality despite the global pandemic in recent years. Twenty-three countries are reforming their laws to support the advancement of economic inclusion for women.

The Women, Business, and the Law 2022 measures all forms of formal law in 190 countries that impact eight areas of women's involvement in the economy, namely the mobility, workplace, wages, marriage, parental life, entrepreneurship, asset ownership, and pension funds.



Gender Equality Facts in the World Based on World Bank Records

- 12 OECD Member States Uphold the Equality of Laws for Women.
- Hong Kong, China Implements 14 Weeks of Pair Maternity Leave Policy.
- Armenia, Switzerland, and Ukraine Implement Paid Maternity Leave Policy for Husbands.
- Colombia, Georgia, Greece, and Spain Implement a Policy of Providing Paid Leave for Mothers and Fathers to Take Care of Newborns.

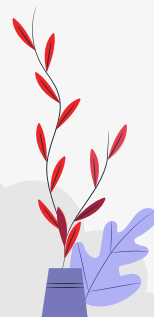
What Are the Efforts of Cambodia and Vietnam to Close the Gender Gap?



A release from the World Bank dated March 1, 2022, stated that, despite the pandemic, twenty-three countries have succeeded in perfecting laws to promote women's economic inclusion in 2021.

Two of the twenty-three countries are Cambodia and Vietnam. Currently, Cambodia has implemented gender equality in the pension system so that now men and women can enter retirement at the same age and receive the same full pension benefits.

Then, Vietnam is one of the countries that erased the gender gap the fastest in the last 20 years. Currently, Vietnam has removed all forms of discrimination and restrictions against women in the field of work.



Reasons for the Ministry of Education, Culture, Religion, and Technology to Launch Merdeka Belajar (Lit: Freedom to Learn)

Merdeka Belajar is part of the government's focus on improving the quality of Indonesia's human resources at national and global levels. Merdeka Belajar is one of the programs available to create a pleasant learning atmosphere for students and teachers.

Through the Merdeka Belajar Kampus Merdeka program (lit: Freedom to Learn Free Campus), university students are allowed to explore the knowledge needed, so they have the competencies that are valuable in nation-building.

The government also creates synergies between universities and the Business and Industrial World and forms an ABCFGM (Academics, Business, Community, Financing, Government, and Media) collaboration.





Kampus Merdeka Implementation

Organizer

- National Kampus Merdeka Campus (accessible to all)
- Institutional organizer

Quality

- Equivalent to 20 credits

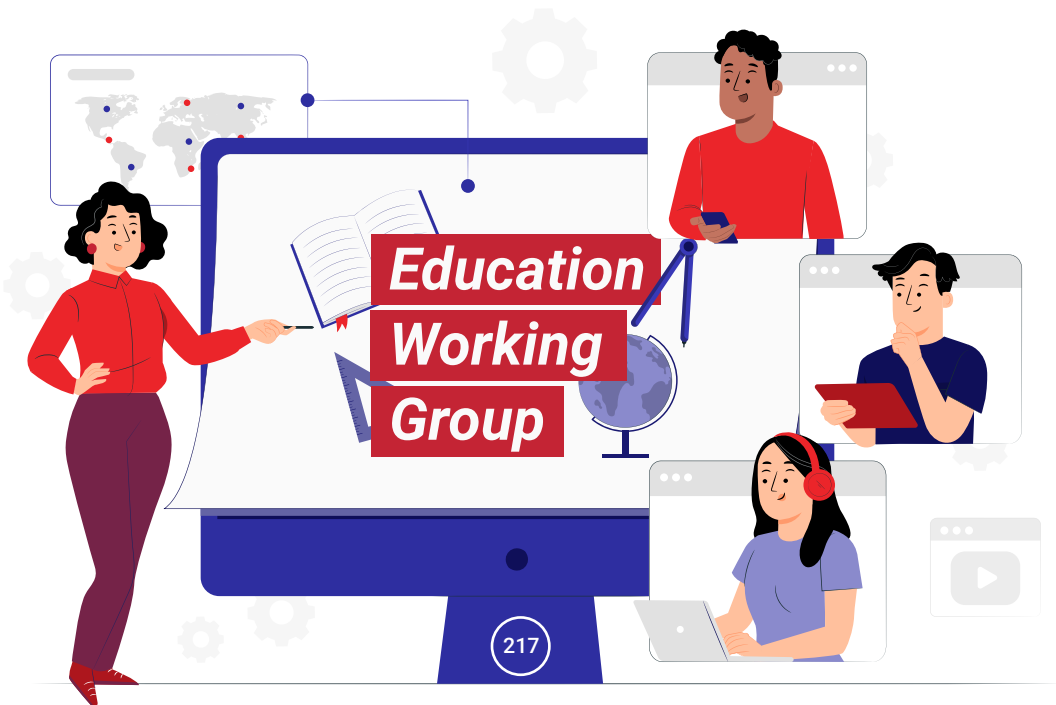
Mahasiswa Merdeka Exchange Program

- Student exchange program


79. What Was the Result of the Second G20 Education Working Group (EdWG) 2022 Meeting?


Under the leadership of Indonesia through the Ministry of Education, Culture, Research, and Technology (Kemendikbudristek), the delegations of the G20 EdWG have agreed on the importance of gotong royong-based (lit: collective cooperation) transformation for the restoration of education.


The Merdeka Belajar breakthrough was raised at the EdWG second meeting as an example of good practice that acts as a milestone in the collective cooperation for education transformation in Indonesia, as well as the basis for the G20 education priority agenda.



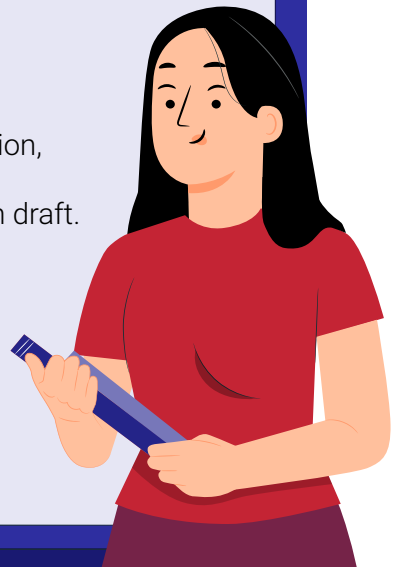
4 Highlights of the second meeting of the EdWG G20

1  The initiative of the Ministry of Education, Culture, Research, and Technology to renew the global commitment to the field of education at the Transforming Education Summit (TES) meeting of the United Nations (UN)

2  EdWG 20 priority agenda, namely Quality Education for All and Digital Technology in Education.

3  Preparation of the EdWG G20 report.

4  The Minister of Education, Culture, Research, and Technology declaration draft.



80. What Will be the Follow-up to the G20 EdWG Report?

In addition to leading the preparation of the G20 EdWG results report, the Ministry of Education, Culture, Research, and Technology also initiated discussions to bring the results of the G20 EdWG to the United Nations (UN) forum through the Transforming Education Summit (TES) meeting.





About Transforming Education Summit (TES)

The TES is a forum to mobilize preeminent enthusiasm, commitment, and political will to recover from the decline in the achievement of the fourth Sustainable Development Goals (SDGs) due to the pandemic, reorganize education, and accelerate educational progress and realization of the SDGs' 2030 Agenda.

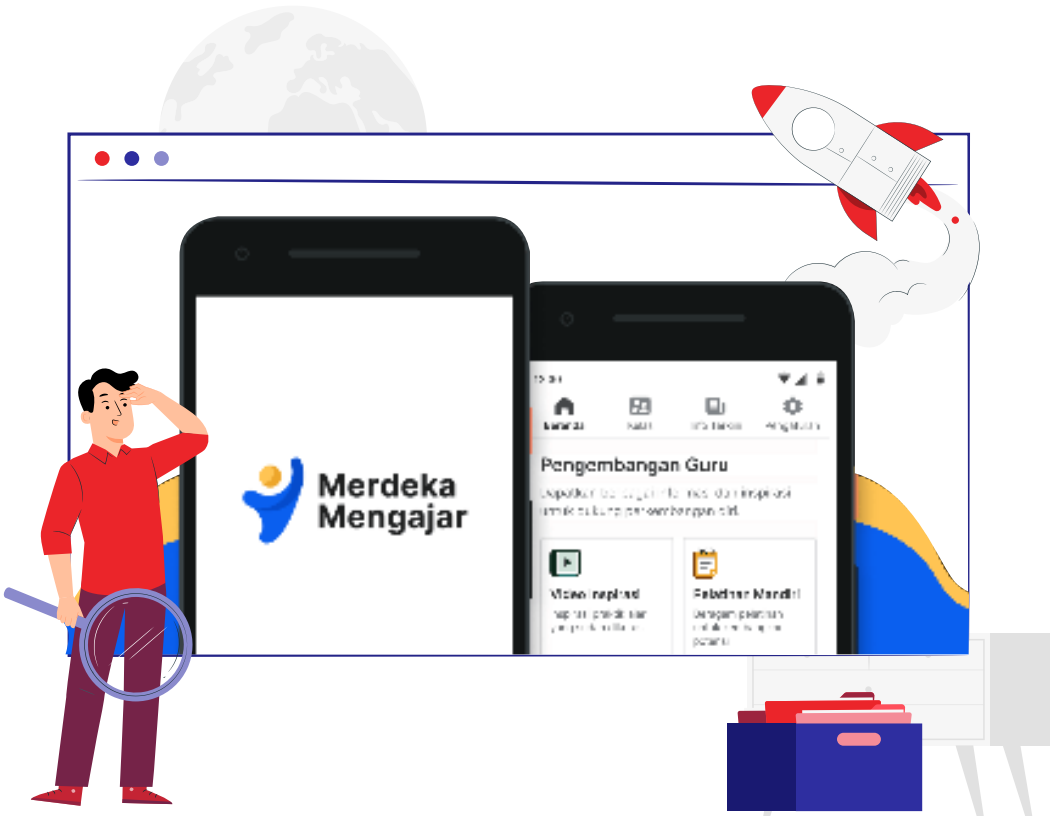
81. As Technology Is Getting More Sophisticated, Are Teachers Still the Only Key to Successful Learning?

The use of digital technology in education became the second priority issue discussed at the G20 EdWG inaugural meeting in Yogyakarta in mid-March 2022.

The EdWG Chair Iwan Syahril said that the strategic and appropriate technology utilization in education plays a primary role in rebuilding quality education and learning.

However, technology still cannot replace the function of teachers as forefront educators.





Merdeka Mengajar Platform (lit: Freedom to Teach)

A technology platform provided for educators to support teaching, learning, and creative activities

Platform contents

- Student Assessment
- Self Training
- Teaching Device
- Proof of Work

Measuring Education Quality using Programme for International Student Assessment (PISA)

PISA is an examination system initiated by the Organization for Economic Cooperation and Development (OECD) to evaluate the education system in more than 70 countries. Every three years, 15-year-old students are randomly selected to take a test of three elementary competencies: reading, math, and science.

PISA measures what a student knows and what he can do with the knowledge. The last PISA exam was conducted in 2018, where Indonesia got a score of 371.

The Minister of Education, Culture, Research, and Technology Nadiem Makarim stated that Indonesia still has a number of homework to do to improve the quality of education in Indonesia, such as equal distribution of the number and quality of teachers.

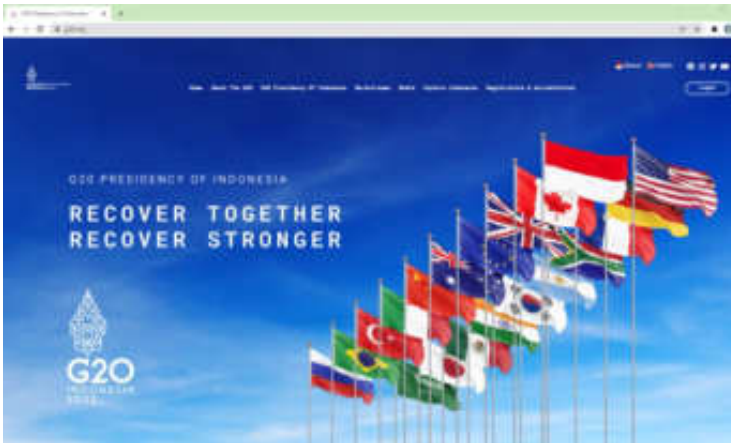
Although there are still a number of things that need to be improved, Indonesia has recorded progress in the number of people attending school.

In 2000, only 39% of the population aged 15 and over attended junior and senior high school levels, while in 2018, this figure increased to 85%.



82. What is the Official Website of the G20?

The official website of the G20 is <https://g20.org>



83. What are the G20's Social Media Accounts?

Follow these following social media platforms to interact with and get more information about the G20 Presidency:



G20 official accounts in Bahasa Indonesia:



84. Glossary

Access to COVID-19 Tools (ACT) Accelerator Initiative

A global collaboration that brings together governments, scientists, manufacturers, corporations, civil society, philanthropists, and global health organizations to accelerate development, production, and equitable access to COVID-19 testing, treatment, and vaccination.

Arm's Length Principle (ALP)

The valuation principle applied to commercial and financial transactions between parties with a special relationship, such that the transaction is valued as if it were carried out by parties without a special relationship who act in their respective interests.

Asynchronous Recovery

Asynchronous economic recovery conditions where developed countries recover faster while developing and low-income countries recover more slowly.

AUKUS

A trilateral security pact between Australia, the United Kingdom, and the United States, with the primary goal of assisting Australia in developing and deploying nuclear-powered submarines in the Indo-Pacific region.

Automatic Exchange of Information (AEOI)

Information exchange that occurs at a certain time, on a periodic, systematic, and recurring basis, on financial information provided in accordance with the Common Reporting Standard.

Base Erosion and Profit Shifting (BEPS)

A tax planning strategy that takes advantage of gaps and disparities in tax treatment found in tax laws and regulations between countries in order to transfer these benefits to countries with low or no tax rates. A country may lose significant tax revenues as a result of base erosion or profit shifting to other countries with lower tax rates. In the long run, it might jeopardize a country's fiscal sustainability in supporting its economic development.

Blended Finance

Strategic use of development finance to mobilize more funding for developing countries' sustainable development (OECD); A mixed financing strategy that combines government funds, funds from international development organizations, and philanthropic funds to encourage and mobilize private sector participation in promoting sustainable development. (kemenkeu.go.id).

Communique

A joint statement issued by the members of the G20 forum containing joint commitments and statements to be delivered to the public; it generally comprises of the most recent global topics of common concern and is the product of the G20 forum's consensus.

Compact with Africa (CwA)

G20 initiatives campaigned for macroeconomic, business, and financial reforms to boost the attractiveness of private investment in Africa during Germany's G20 presidency in 2017.

Countercyclical

Policies that adopt the opposite approach or go against the flow of the business cycle, such as lowering expenditure and raising taxes during a boom and boosting spending and decreasing taxes during a recession.

Deliverables

The final output of each G20 agenda, which is prepared through a tiered process under the G20 meeting framework.

Development Finance

Efforts provided with the primary goal of development with no expectation of a return on investments.

Engagement Group

Engagement groups are groups made up of non-governmental participants from each G20 member that serves as a discussion platform for G20 members who want to consult with relevant stakeholders. These groups make suggestions to G20 governments and contribute to the policy-making process. There are ten engagement groups: B20, C20, S20, T20, L20, W20, U20, Y20, P20, and SAI20.

Exit Policy

Normalization of economic policies, including fiscal and monetary policies, implemented by countries in order to exit extraordinary policies implemented during crises. Often referred to as an exit strategy.

Federal Funds Rate (FFR)

The interbank interest rate set by the Federal Open Market Committee (FOMC) of the Fed as the cost of borrowing or lending bank reserves placed by commercial banks at the American central bank overnight on an uncollateralized basis.

Finance and Central Bank Deputies Meeting (FCBD)

Deputy level meeting where the outcomes of the discussion will be deepened and concreted at the working group level before being taken to the ministerial and high-level conferences (KTT). FCBD meeting is held in a hybrid format and is attended by G20 members, invited countries, 20 international organizations, and 3 regional organizations.

Finance Track

The G20 forum's finance track or agenda discussion which includes meetings between finance and economy ministers, central bank governors, deputy

ministers, and sherpas appointed by each economic ministry, mostly focusing on economic, financial, monetary, and tax issues.

Financial Inclusion

Financial inclusion is a state in which every member of a community has access to varied quality formal financial services in a fast, efficient, and safe manner at affordable price based on their needs and abilities in order to increase the community's welfare.

Finance Ministers and Central Bank Governors (FMCBG) Meeting

Meeting between finance ministers and central bank governors. The agenda for the FMCBG meeting focuses mostly on exit strategies to help economic recovery, strategies to mitigate the impact of the COVID-19 pandemic, financial inclusion, digital era payment systems and sustainable financing, and international taxation.

Group of Twenty (G20)

The G20 is an intergovernmental forum for international economic cooperation comprising 19 countries and the European Union, with the goal of connecting the world's major developed and emerging economies, and plays a strategic role in ensuring future global economic growth and prosperity.

G20 Energy Access Action Plan

G20 Energy Access Action Plan aims to strengthen G20 member collaboration on energy access issues in a flexible manner, taking into account existing initiatives, and focusing on adding value through sharing knowledge, experience, and best practices, in accordance with situations and national development priorities.

Global Expenditure Support Fund (GESF)

Support for developing countries to secure the national budget in a liquidity crisis.

Global Infrastructure Connectivity Alliance (GICA)

GICA is a G20 initiative that promotes cooperation, knowledge sharing, and meaningful progress in fostering global connectivity. The World Bank Hub for Infrastructure and Urban Development in Singapore is hosting GICA Secretariat.

Inclusive Digital Economy Accelerator (IDEA Hub)

A forum where unicorns (start-ups with a market valuation of more than \$1 billion) across the G20 countries gather to exchange ideas.

Issues Note

A brief description of the agendas to maintain the direction of the discussion at the G20 meeting.

Joint Finance Health Task Force (FHTF)

The G20's work unit consisting of finance and health ministers whose goal is to prepare for pandemic prevention, preparedness, and response. Starting with President Joko Widodo's presentation as a response to the pandemic preparedness mechanism, in the first intervention of G20 Summit's on

strengthening the global health architecture through collaboration between countries in access to vaccines, health protocols between countries during a pandemic outbreak, and funding.

Leader's Summit or G20 Summit

The culmination of the G20 meeting process; a meeting at the level of heads of state/government

Ministerial & Deputies Meetings

Ministerial and deputy (sherpa) level meetings which are held in accordance with the major topic of each forum. Ministerial-level meetings of the finance track, for example, will be attended by the finance ministers and central governors of each G20 member.

Multilateral Development Banks (MDBs)

Institutions that give financial support and expert advice to developing countries for a variety of economic and social development activities in order to improve economic management and eliminate poverty.

Nationally Determined Contribution (NDC)

Each parties' commitment to the Paris Agreement. As part of its commitment to climate change, Indonesia has set a goal of achieving net zero emissions (NZE) by 2060 as one of its national priority agendas.

Net Carbon Sink

The quantity of carbon emissions sequestered is substantially greater than the amount released.

Nexus

"Connection" or "connectedness." In taxation, the term is used to characterize businesses that have a tax presence in a particular state.

Organisation for Economic Co-operation and Development (OECD)

An international organization made up of twenty countries that believe in representative democracy and a free-market economy.

Pillar One G20 Inclusive Framework on BEPS

One of the Two-Pillar Solution, by reforming the international taxation system, which is done by allocating taxation rights fairly to countries that tend to be digital goods and services markets.

Pillar Two G20 Inclusive Framework on BEPS

One of the Two-Pillar Solution, known as the Global Anti-Base Erosion Rules (GLoBE), to ensure that all multinational enterprises/MNEs pay minimum taxes in all jurisdictions where they operate, with the goal of preventing unfavorable tariff competition between countries.

Recover Together, Recover Stronger

The G20 theme represents Indonesia's solidarity, particularly as an emerging country, in order for the world economy afflicted by the pandemic to recover together. The theme has three primary pillars: improving productivity through human resource strengthening (pillar 1), enhancing the resilience of the Indonesian economy which is becoming increasingly resilient and sustainable (pillar 2), and ensuring sustainable and inclusive growth (pillar 3).

Scarring Effects

The state or impact of medium-to-long-term damage to one or more countries' economic structures following a severe economic crisis (in this example, COVID-19), which subsequently leads to a recession. These conditions have the effect of increasing company failures and unemployment, declining investment levels, and reducing the economy's ability to develop faster in the future.

Sherpa Track

Discussion of the agenda in the G20 forum which focuses on broader topics such as climate change, development, trade, energy, anti-corruption, and geopolitics. The three key subjects on Indonesia's priority agenda will be health, the digital economy, and the energy transition. Sherpa Track consist of eleven working groups, one initiative group, and ten engagement groups.

The term "Sherpa" originates from the Nepalese word for guide, describing how the G20 Sherpas pave the way to the Summit.

Sovereign Wealth Fund (SWF)

A government-created or-owned special investment fund that is used to achieve specific goals such as asset control and management or the implementation of a set of investment strategies that includes investing in foreign financial assets. Balance of payments surpluses, foreign currency operations, privatization profits, fiscal surpluses, and/or commodity export income can all be used to create SWFs.

Special Drawing Rights (SDR) Allocation

SDR Allocation is the allocation of special drawing rights through international reserve assets created by the International Monetary Fund (IMF) to supplement the official foreign exchange reserves of its member countries, allowing them to reduce their reliance on domestic or foreign debt to build up their reserves (SDR can provide liquidity for a country). The SDR will assist sustain investor confidence and boost prospects for a global recovery, in addition to preventing a liquidity crisis from becoming a bankruptcy crisis. G20 members and invited countries committed at the last G20 meeting that unused SDRs would be rechanneled and relocated to vulnerable countries in need as support for economic recovery, structural transformation, and global income convergence.

Sustainable Development Goals (SDG)

The SDGs are a global action plan to eradicate poverty, reduce inequality, and protect the environment that has been agreed to by world leaders, including Indonesia.

Tapering Off

The reduction of the monetary stimulus implemented by the central bank, which was implemented when the economy was under threat and required a large amount of liquidity injections, as the economy began to recover, as seen by increasing inflation.

Tax Haven

Countries or jurisdictions that charge minimal taxes on foreign corporations and persons, or even exempt and/or do not tax them at all.

Troika

To ensure consistency and continuity of the G20's agenda, the current chair collaborates with the immediately preceding and succeeding chairs (in the 2022 G20, the current, previous, and incoming presidencies are Indonesia, Italy, and India). The three countries work closely together to manage the overall G20 priority agenda.

Universal Health Coverage (UHC)

Universal health coverage strives to ensure that everyone has access to high-quality healthcare without financial hardship. It is an integral part of achieving the Sustainable Development Goals.

Working Group

The working group is part of the G20 decision-making process, which consists of key specialists and ministries on each subject, and is in charge of leading an in-depth analysis of a variety of internationally relevant issues. On the Sherpa Track, there are 12 types of working groups: AWG, DEWG, EdWG, EWG, TWG, DWG, ETCSWG, ETWG, ECSWG, TIIWG, ACWG, HWG, G20 EMPOWER. Meanwhile, Framework Working Group (FWG), International Financial Architecture (IFAWG), Infrastructure Working Group (IWG), and Sustainable Finance Working Group are the four primary working groups of the Finance Track (SFWG).

QRIS

Quick Response Code Indonesia Standard (QRIS) is a payment system technology innovation that improves transaction efficiency, supports trade and investment digitalization, and maintains macroeconomic stability by expanding the transaction settlements using local currencies.

PISA

Programme for an examination system initiated by the OECD to evaluate the education system in more than 70 countries, has been taking place since 2000.

No.	Resources
1.	www.g20.org
2.	www.kominfo.go.id
3.	www.antaranews.com
4.	www.bi.go.id/id/g20/Default.aspx
5.	infopublik.id/kategori/g20
6.	www.indonesia.go.id/g20
7.	www.bps.go.id
8.	www.kumparan.com
9.	www.who.int
10.	www.kemnaker.go.id
11.	www.menlhk.go.id
12.	www.esdm.go.id
13.	www.kemkes.go.id
14.	www.kemdikbud.go.id
15.	www.setkab.go.id
16.	www.kpk.go.id
17.	www.covid19.go.id
18.	www.kemenkeu.go.id
19.	www.bkkbn.go.id
20.	www.kemenkopmk.go.id
21.	www.kemenpppa.go.id
22.	www.worldbank.org
23.	www.oecd.org

compiled and curated by



Further information

www.g20.org

**Information, data, criticism, and suggestions
for improvement**

email us at indonesiabaik@kominfo.go.id

v2022.06.26.000



g20.org